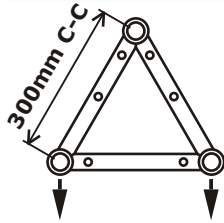


Global Truss A33 Apex Up Load Tables

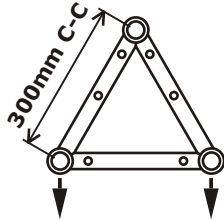
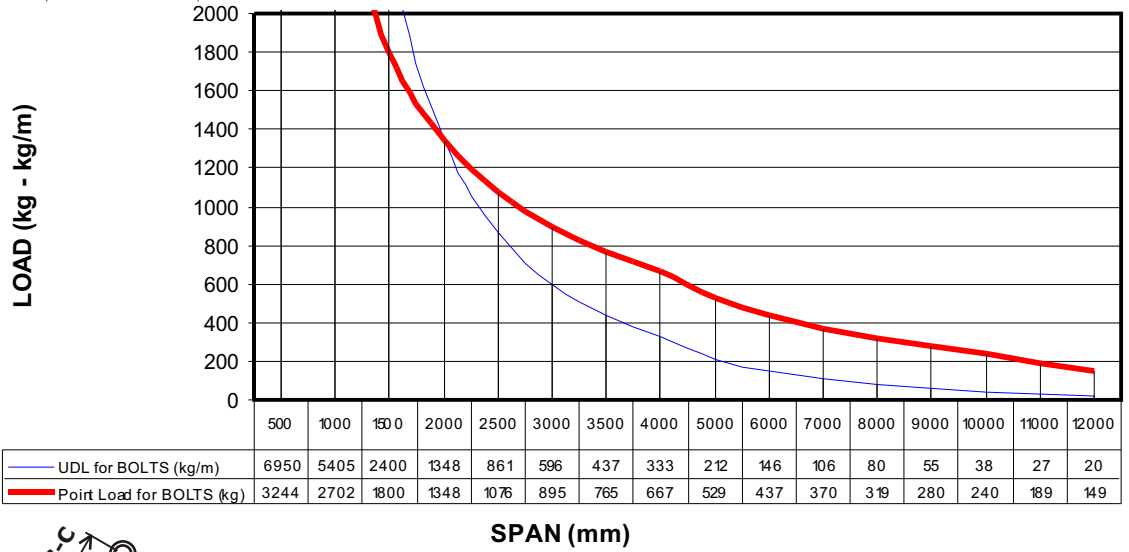
Structural engineering tables provided by Scott Tech **SCOT TECH CONSULTING** CONSULTING. Calculations are based on NO WIND LOADS. 27 ALEX AVENUE, SCHOFIELDS NSW 2762



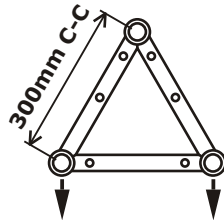
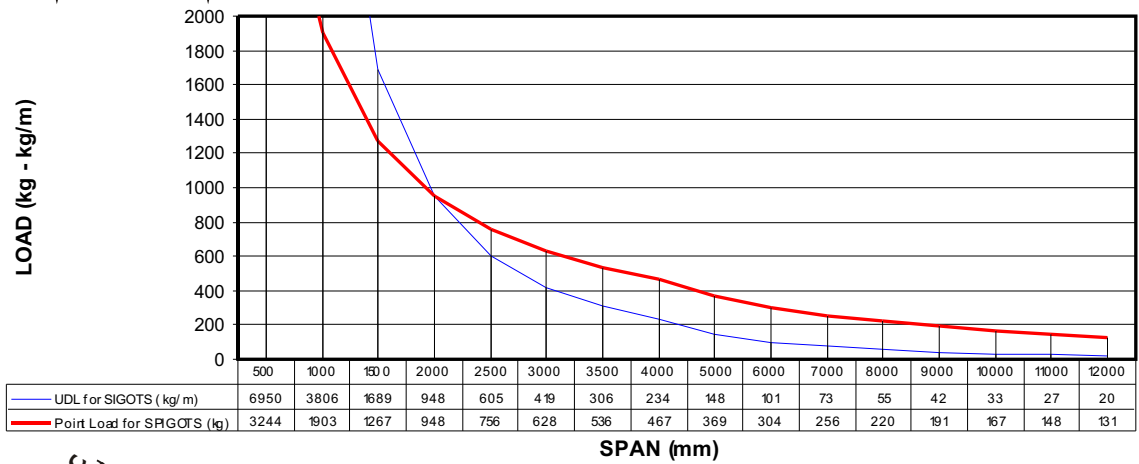
The smart alternative.



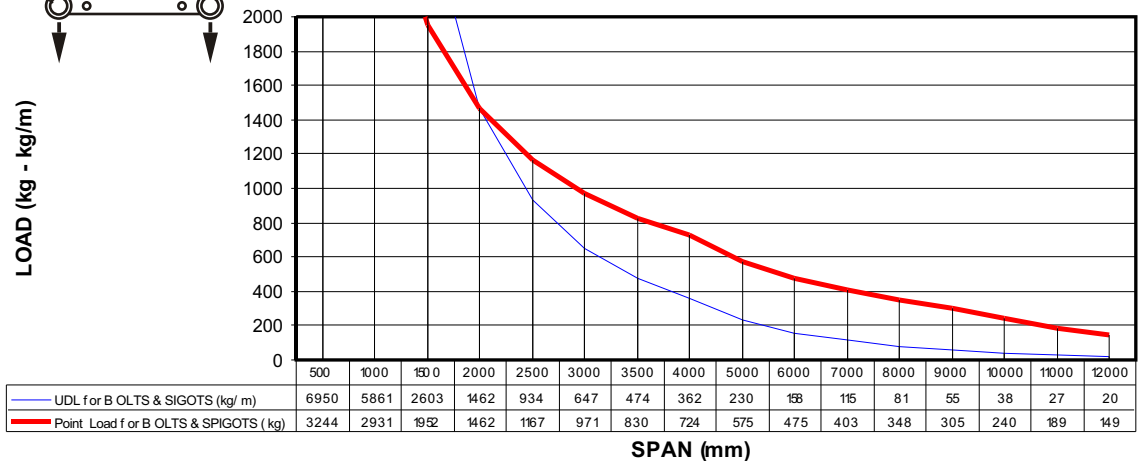
A33 3 TUBE TRUSS Bolted Connection



A33 3 TUBE TRUSS Spigots Only Connection



A33 3 TUBE TRUSS Spigots & Bolts Connection



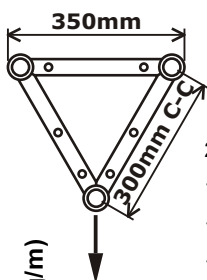
structural solutions
lighting · display & exhibition · design
www.dq.com.au

Global Truss A33 Apex Down Load Tables

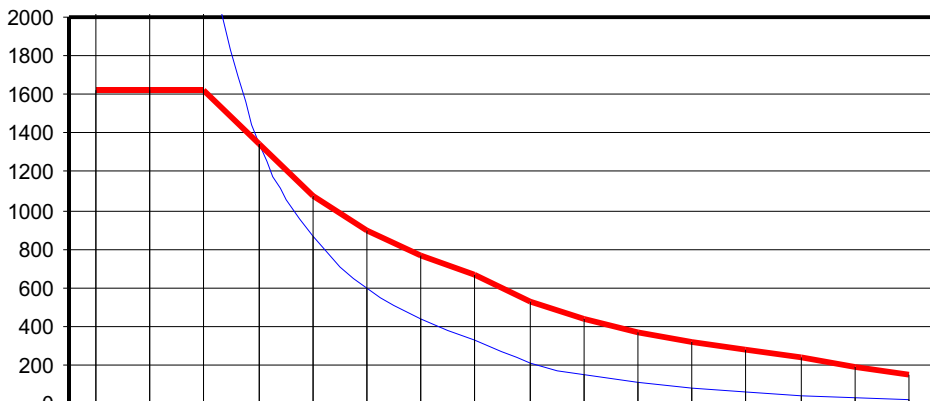
Structural engineering tables provided by Scott Tech **SCOT TECH CONSULTING** CONSULTING. Calculations are based on NO WIND LOADS. 27 ALEX AVENUE, SCHOFIELDS NSW 2762



The smart alternative.



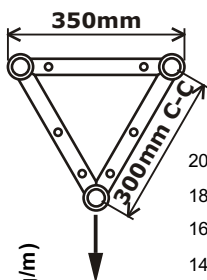
LOAD (kg - kg/m)



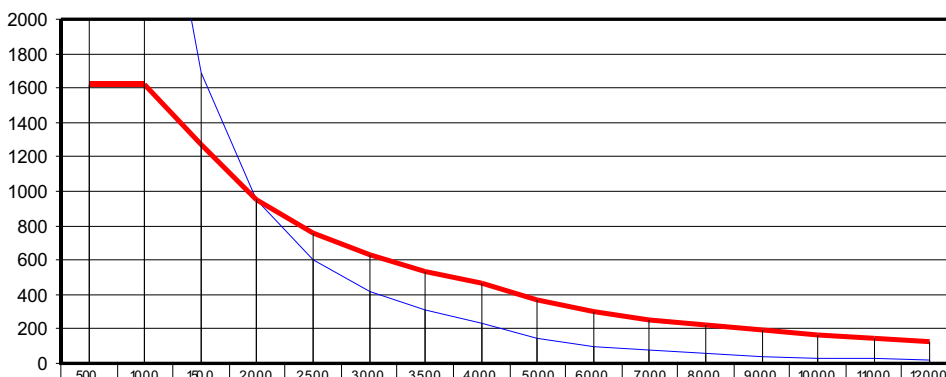
	500	1000	1500	2000	2500	3000	3500	4000	5000	6000	7000	8000	9000	10000	11000	12000
— UDL for BOLTS (kg/m)	3475	3475	2400	1348	861	596	437	333	212	146	106	80	55	38	27	20
— Point Load for BOLTS (kg)	1622	1622	1622	1348	1076	895	765	667	529	437	370	319	280	240	189	149

SPAN (mm)

A33 3 TUBE TRUSS Spigots Only Connection



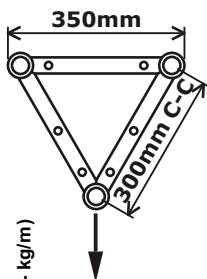
LOAD (kg - kg/m)



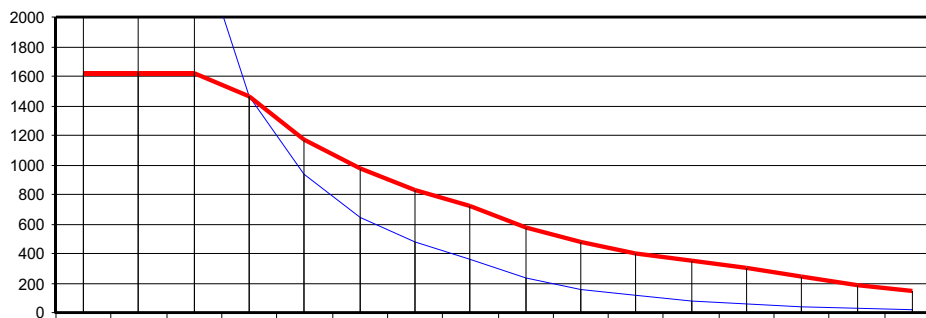
	500	1000	1500	2000	2500	3000	3500	4000	5000	6000	7000	8000	9000	10000	11000	12000
— UDL for SPIGOTS (kg/m)	3475	3475	1689	948	605	419	306	234	148	101	73	55	42	33	27	20
— Point Load for SPIGOTS (kg)	1622	1622	1267	948	756	628	536	467	369	304	256	220	191	167	148	131

SPAN (mm)

A33 3 TUBE TRUSS Spigots & Bolts Connection



LOAD (kg - kg/m)



	500	1000	1500	2000	2500	3000	3500	4000	5000	6000	7000	8000	9000	10000	11000	12000
— UDL for SPIGOTS & BOLTS (kg/m)	3475	3475	2603	1462	934	647	474	362	230	158	115	81	55	38	27	20
— Point Load for SPIGOTS & BOLTS (kg)	1622	1622	1622	1462	1167	971	830	724	575	475	403	348	305	240	189	149

SPAN (mm)



structural solutions

lighting · display & exhibition · design

www.dq.com.au