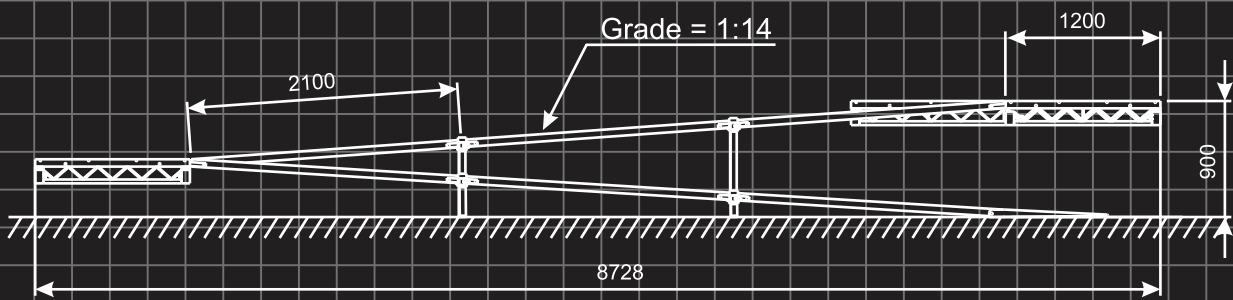


NEW

Global
IPUSS

DISABLED ACCESS RAMP



- The only "off-the-shelf" ramp system that complies with the building code of Australia.
- Modular system for stage heights from 300mm to 900mm in 150mm increments.
- Light-weight ramp decks.
- Standard stage decks are used as landing where required.
- Guard rails to prevent roll-off.

