



Image courtesy of Prolyte Group, StageDex

STAGE*it*

STAGEDEX	3-18
Top Line Frames	3
Basic Line Frames	3
Acrylic Top	4
Technical Specifications	5
Stage Frames	6
Easy Frame B	7
Easy Frame C	9
Easy Frame D	10
StageDex Accessories	11—12
EasyRail	14—15
StageDex Dolly	16
StageDex Ramps	17—18
Disabled Access Ramp	17
Multipurpose Ramp	18

Deck Frames



Image courtesy of Australian Museum

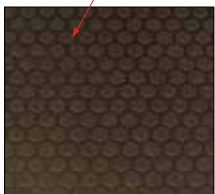
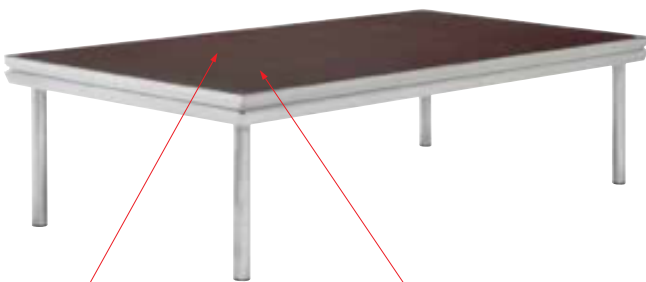
StageDex is based on a special extruded aluminium profile. The top board is bolted and glued to the frame to reduce noise and vibration. All decks are available in metric and imperial sizes.

TOP LINE FRAME

- Internal reinforcement of corner
- Standard spigot entry on the topside of the deck to attach EasyRail system
- Birch plywood, special water resistant quality

BASIC LINE FRAME

- Top option; Birch plywood, unfinished, indoor use only.
- Top option; Birch plywood, clear varnish, indoor use only.
- Top option; Birch plywood, black coating, indoor use only.



PL SM-D-T
Birch plywood, anti skidding top layer, non permanent outdoor use



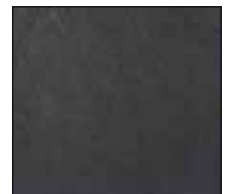
Top line frame, reinforcement corner



PL SM-DL-U
Birch plywood, unfinished, indoor use only



PL SM-DL-C
Birch plywood, clear varnish, indoor use only



PL SM-DL-B
Birch plywood, black coating, indoor use only

Deck Frames

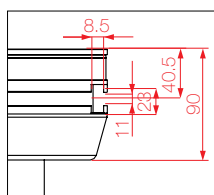


Image courtesy of Extreme Jordan

SPECIAL TOP OPTION

- Luxurious transparent decks for special applications. The transparent top board is made from durable, scratch-resistant Acrylic.
- High load resistance, 500 kg/m²
- Can be combined with regular StageDex.
- Clear / acrylic
- Frosted / acrylic
- Maximum allowable temperature 70°C

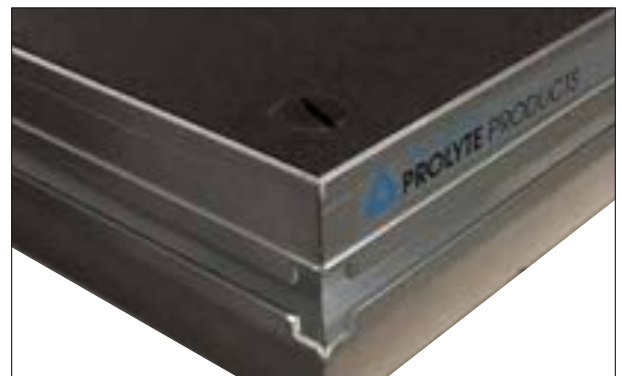
For both StageDex types different types of top board can be supplied on request. Contact our Internal Sales department for more information.



PL SM-DL-D Clear
PL SM-DL-DF Frosted

CLEVER PARTS THAT MAKE THE DIFFERENCE

1. Choose a top line frame to have the advantages of a top-based spigot entry, which allows simple and efficient mounting of handrails.



2. The universal leg fitting can hold square as well as round types of legs and fixates with one simple handle. The multifunctional profile offers several add-ons.



Deck Frames

DEFINITION

Currently there are no strict definitions for a stage as used in the entertainment market. A stage or stage floor as discussed here is essentially a temporary raised platform to accommodate performances of any kind at public or private events.

APPLICATION

Stages, stage floors, raised floors and raised seating areas are used in the event, hotel and exhibition market, a broad business sector that encompasses (but is not restricted to) all activities for leisure and sports, arts and cultural performances, amusement, or the presentation of products.

Allowable loading for different leg types					
LEG TYPES	UNIFORMLY DISTRIBUTED LOAD kg/m ²				
STAGE HEIGHT IN CM	80 cm	100 cm	120 cm	160 cm	180 cm
StageDex: Tube 48.3 x 3 (EN AW 6082 T6)	750	500	500	350	n.a.
Profile 40 x 40 x 3 (EN AW 6082 T6)	750	500	500	500	350
Tube 48.3 x 3 (S235JR)	750	750	500	500	500
Telescopic leg	stage height 450 mm - 1400 mm 750 - 350 kg/m ²				
	450 < 800 mm	800 < 1200 mm	1200 < 1400 mm		
	750 kg	500 kg	350 kg		

n.a. = not allowed

all data based on a standard deck of 2 x 1m

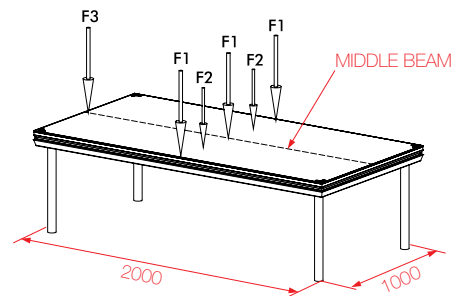
TECHNICAL SPECIFICATIONS	
Types	standard, standard arched, basic
Frame	Aluminium (EN AW 6063 T6)
Top board	Plywood
Legs	48.3 x 3 mm (EN AW 6082 T6)
Legs with adjustable feet	48.3 x 3 mm (EN AW 6082 T6), with steel spindle on pvc base
Telescopic leg	48.3 x 4 / 60 x 5 mm (EN AW 6082 T6)
Maximum load	750 kg/m ² UDL
Self weight	35.6 kg

Calculated with 1/10 of the vertical load transferred into a horizontal load (conform DIN 15921 / EN 13814)

Loading types (for all decks except Acrylic)	
Uniformly distributed load	750 kg/m ²
Pointload F1	350 kg
Pointload F2	210 kg
Pointload F3	500 kg

The pointload should be applied to a minimum area of 50 x 50 mm.

Pointload to be placed as indicated on drawing. 1 pointload total allowed.



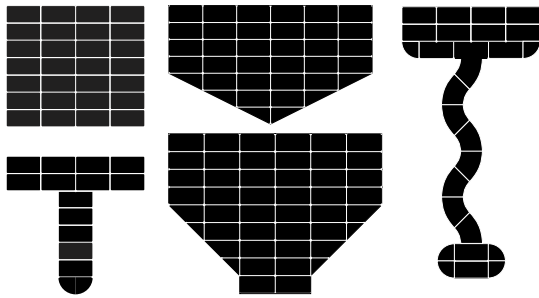
DO

- Check to ensure the stage floor is properly aligned and completely level.
- Check the application conditions of your stage, as the type of use is directly related to safety issues like handrails.
- Brace your staging legs when needed for stability.
- Make sure all stage elements are interconnected.
- Take notice of local regulations for stages and allowed purposes.
- Store StageDex upside down to decrease setup time.
- Maintain your StageDex at regular intervals.
- Inform your crew beforehand on safety procedures (like evacuation procedures) in case of emergency situations.
- Make sure your construction is properly grounded.

DO NOT

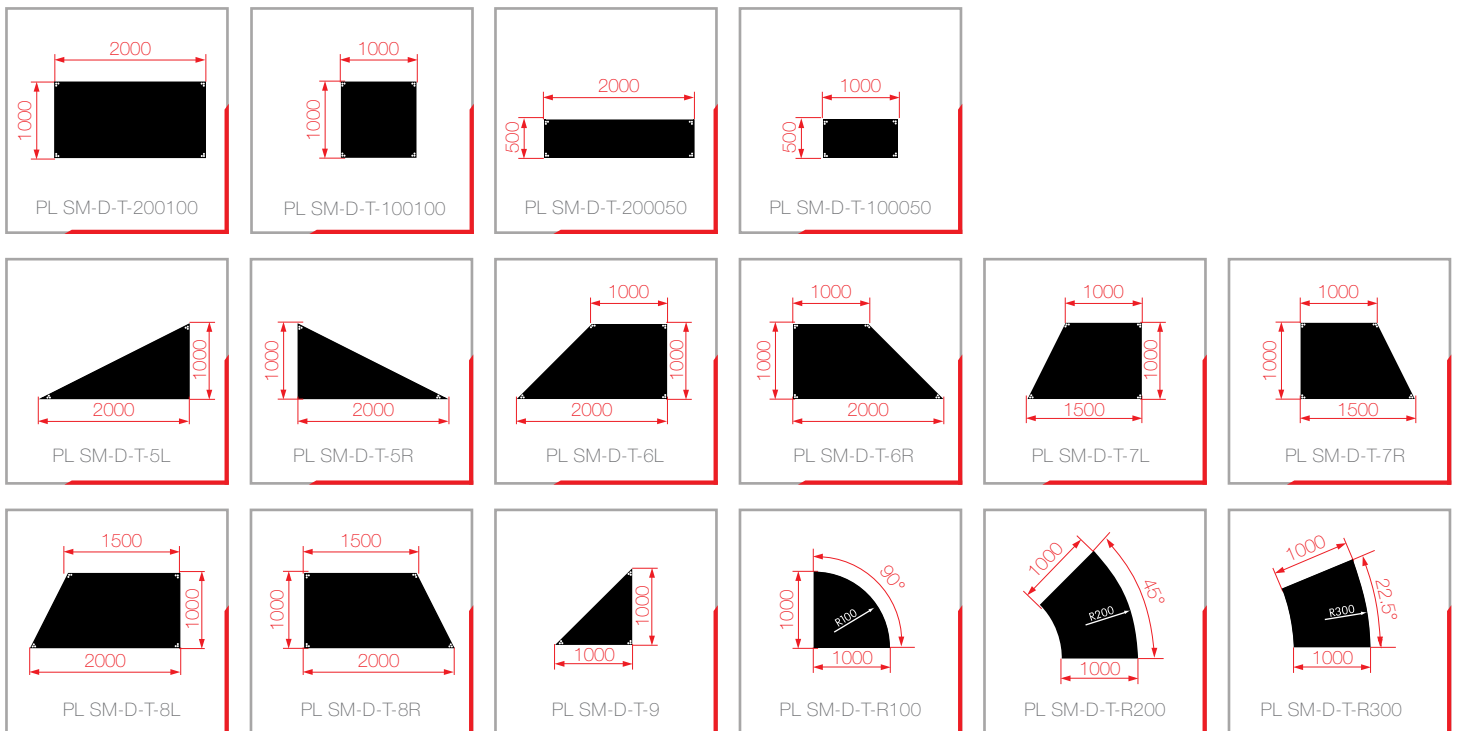
- Use materials in poor condition, the payload might be reduced substantially.
- Apply loads before knowing their exact weight and size.
- Exceed the maximum allowable load.
- Use unfinished StageDex top board in outside conditions.
- Exceed the maximum building height of the stage or its support frame.
- Use the hang-on profile without reducing the maximum allowable payload.
- Build your stage on unstable ground.
- Use StageDex elements as ballast for your roof without using the proper support frame.

Deck Frames



USE YOUR IMAGINATION

What if the systems flexibility would not limit your imagination in designing and building staging constructions? StageDex offers endless flexibility to create the designs you require, a variety of standard sizes and shapes as well as easy and often tool less mounting makes construction an easy task.



CIRCULAR STAGES

The Prolyte Group is able to fabricate circular stages that are actually based on curved segments. Each section or segment is handbuilt by Prolyte's craftsmen, therefore small differences in size and shape may occur.



STANDARDS

- Standards that apply to stages and temporary constructions:
- DIN EN 1990 / Eurocode 0 Basis of structural design
 - DIN EN 1991 / Eurocode 1 Actions on structures
 - DIN EN 1993 / Eurocode 3 Design of steel structures
 - DIN EN 1995 / Eurocode 5 Design of timber structures
 - DIN EN 1999 / Eurocode 9 Design of aluminium structures
 - DIN EN 13814 Fairground and amusement park machinery and structures - safety
 - DIN 15921 Entertainment technology - Aluminium platforms and frames - Safety requirements and testing



Photo: Decima SRL, Padova, Italy, Scenographer Santucci Claudio

Easy Frame B



EASY FRAME B

System Description

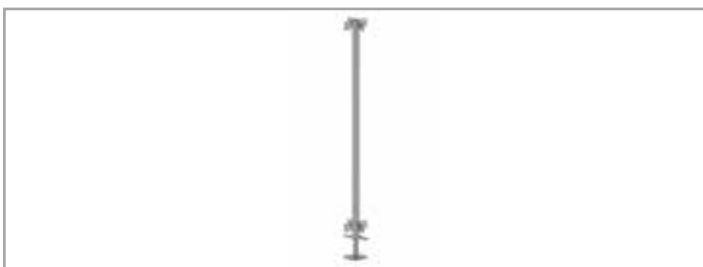
The EasyFrame B is a support frame suitable for indoor or outdoor use. The frame racks are available in several heights and lengths. The frames connect to the legs with a standard 4-way connection by means of a locking pin. Due to the closed topside, assembly is possible with only one technician. After positioning, the frames are stable and freestanding, and will not topple over. Spindle feet, placed in the bottom of the frames, make it possible to level the stage at an exact position and to vary the height of your stage floor.

Ballast System

Stages are often used in combination with temporary roof structures. If used correctly, the weight of your stage floor can act as a ballast system for the roof construction. The EasyFrame B support system is constructed such that the complete stage floor is interconnected. If the stage is lifted at one end, the complete stage will be lifted. Only constructions that comply with these criteria may act as ballast system for roof constructions. Apart from this fact, the EasyFrame B is suitable to absorb the horizontal forces resulting from the base sections of the roof towers. Prolyte can supply interfaces for all Prolyte roof systems.

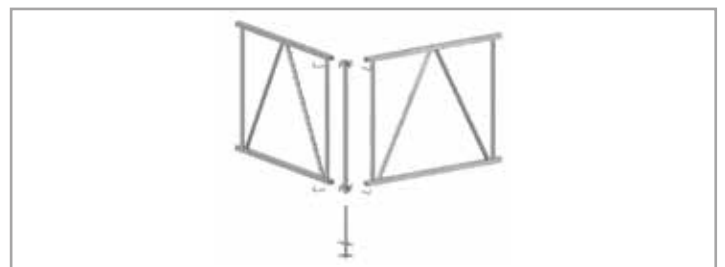
ADVANTAGES

- Interconnected framework can act as ballast systems for roof constructions
- Can absorb horizontal forces resulting from eventual wind forces on the roof
- Interfaces for all Prolyte roof systems available
- Fit for various brands of staging by using special adaptors to secure your decks
- The maximum allowable load of 750kg/m² and 10% horizontal load are guaranteed.
- Standard stage elements provide your stage floor
- Fast assembly, no tools and a minimum amount of loose parts



STEP 1

Place the leg with 4-way joint where wanted. The leg is available in lengths of 1000mmH, 1500mmH and 2000mmH.



STEP 2

Connect the frame rack to the leg and fix with the L-pin. The ladder frames connect to the 4-way joint by means of a pen/fork connection which is closed on the top side (the fork "rests" on the pen). After positioning, the parts can stand free, without toppling over. This makes the assembly of the locking pin easy.



DECK-TO-FRAME ADAPTOR

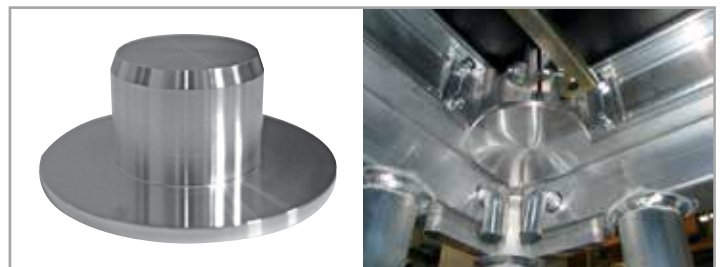
In order to safely mount the decks to the EasyFrame B system, Prolyte has developed the deck-to-frame adaptor. This adaptor is mounted in the leg connection and prevents any horizontal movement of the decks.

CODE	DESCRIPTION
PL SM-F-B-R000100	1000mmH Frame Rack (variable 1200mmH - 1600mmH)
PL SM-F-B-R000150	1500mmH Frame Rack (variable 1700mmH - 2100mmH)
PL SM-F-B-R000200	2000mmH Frame Rack (variable 2200mmH - 2600mmH)



STEP 3

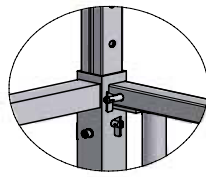
Place the deck-to-frame adaptor (PL SM-F-B-ADAP-01) in the leg fittings of your deck. Place the decks on top of the assembled frames. Level the stage by means of the spindle feet in the legs.



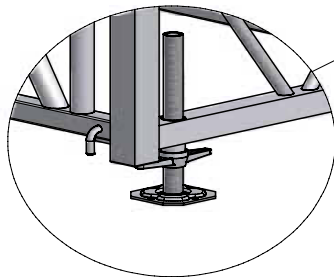
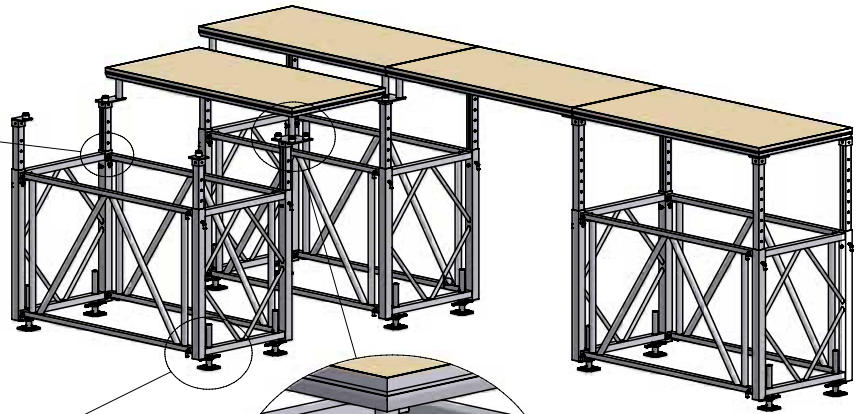
PL SM-F-B-ADAP-01

Deck-to-frame adaptor

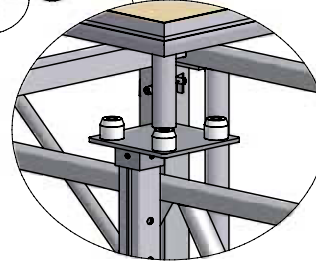
Easy Frame C



Adjustable height



Built-in screwjacks for levelling



Secure, easy mounting of decks

EASY FRAME C

System Description

Based on customer experience, Prolyte created a new, multipurpose support frame that provides the ultimate in configuration flexibility. EasyFrame C is equally adaptable to use for stages, seating areas or tribunes from the base sections of the roof towers. Prolyte can supply interfaces for all Prolyte roof systems.

A strategic investment

The StageDex EasyFrame C can be used for flat stages as well as raised platforms or bleachers (tribunes). This makes the initial investment very economical, since only one system need be purchased for several applications. Ease of assembly also reduces build-up times. Free corridors, which can be created under the stage, allow for handy storage space for your empties and also serve as the ideal location for dimmer city or other uses. Can supply interfaces for all Prolyte roof systems.

Easy does it

The setup of an EasyFrame C is fast, straightforward and requires only one tool. Due to the use of lightweight material, only one technician is needed to handle each part.

There are two basic types of EasyFrame C: Sub frame 1 varies in height between 100-150 cm, while Sub frame 2 varies between 160-270 cm. All intermediate steps are either standard or tailor-made by means of the hole distance in the inside legs.

Optional screw jacks provide levelling, or optional castors give you the opportunity to build a rolling stage as well. Standard StageDex are fitted to the top of the EasyFrame C system with a StageDex adaptor, which fixes the decks horizontally as well as vertically.



Easy Frame D



EASY FRAME D

Fast and Easy

Creating a support construction for any stage always meets strict demands. Coping with short production times, systems like this need to be fast to build and easy to assemble. The Easyframe D offers both, a lightweight pre-build frame is connected with two diagonals to complete the set-up. No tools are needed to mount the frames. The frames can easily be connected with either a 2- or 4-way leg adapter.

EasyFrame D works In- and Outdoor

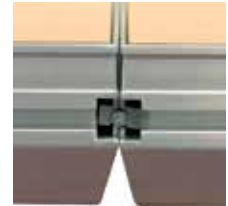
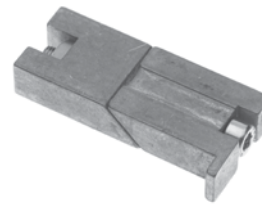
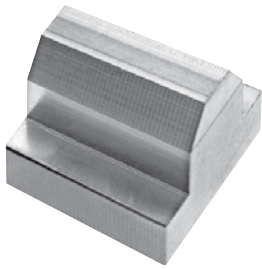
The EasyFrame D is a support frame for both in- and outdoor use. The system is constructed of 60 x 5 and 48,3 x 3 mm aluminium tubes and is used to create stages ranging in height from 110cm. to 150cm. Spindle feet, placed in the bottom of the frames, make it possible to level the stage at an exact position. EasyFrame D is designed to be used with standard StageDex decks, the allowable loading is 500kg/m².

TECHNICAL SPECIFICATIONS

Alloy	Aluminium (EN AW 6062 T6)
Frame	60 x 5 mm / 48,3 x 3 mm
Bracing	48.3 x 3 mm + clamp on braces
Self weight frame	10.0kg
Self weight brace	3.0kg
Stage height variable	110cm to 150 cm
Maximum load	500 kg/m ² UDL



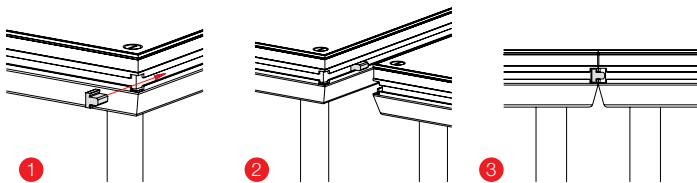
StageDex Accessories



STAGEDEX LEVELLERS

PL SM-ACC-CON-01

Use the StageDex leveller to achieve precise levelling of your stage system and to prevent any vertical movement between the decks. Simply slide the cube into the side profile of the decks. Once the adjoining deck is placed, the StageDex leveller keeps both decks at precisely the same height. A safe and even stage floor, free from tripping hazards, is the result. The levellers can be delivered in several lengths on request.



RAKED DECK COUPLING PROFILE

Coupling Profile

The coupling profile provides an easy method of coupling your StageDex system while still allowing elements of the staging to be raked at a certain angle. This offers the ideal solution for building ramps, sloping walkways or passageways for wheelchairs.

The profile slides into the side of the decks; adjoining deck is safely attached. The maximum raking angle is 30 degrees.

CODE	DESCRIPTION
PL SM-ACC-CON-03	Raked Deck Coupling Profile 150mm Long
PL SM-ACC-CON-04	Raked Deck Coupling Profile 350mm Long
PL SM-ACC-CON-05	Raked Deck Coupling Profile 850mm Long
PL SM-ACC-CON-06	Raked Deck Coupling Profile 1350mm Long
PL SM-ACC-CON-07	Raked Deck Coupling Profile 1850mm Long
PL SM-ACC-CON-08	Raked Deck Coupling Profile 6000mm Long

STAGEDEX CONNECTORS

PL SM-ACC-CON-02

The DEX Connector not only keeps your stage floor leveled, but connects the decks as well. The DEX Connector slides into the side of the profile and is fixed with the aid of a simple hex key; it can be used in combination with the DEX Leveller. The DEX Connector is specially designed for circumstances where the leg-to-leg clamp cannot be mounted, including:

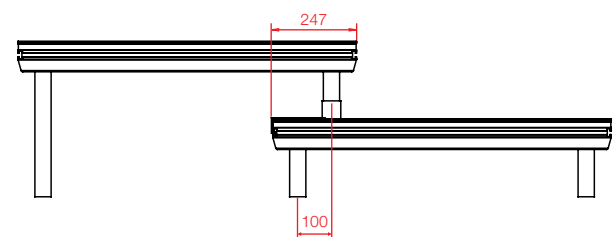
- Low stages. There are no legs or the legs are too short to be able to mount the clamp.
- Angular or curved stages. The centre-to-centre distance of the legs at the angular corners of the stage is too large to mount the clamp.

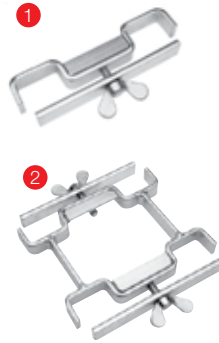
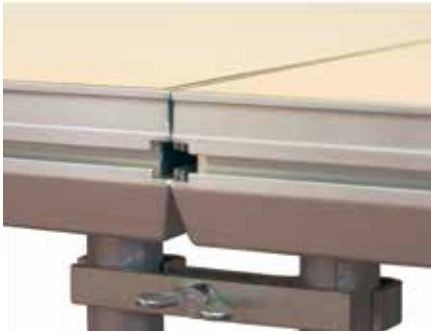


LEG TO DECK ADAPTOR

PL SM-ACC-CON-09

Steel bracket for positioning the stage and keeping legs in place. For tiered seating or multi level stages.





2/4 LEG-TO-LEG CLAMP

PL SM-ACC-CLP-01/02

As well as the PL SM-ACC-CLP-01, the leg-to-leg clamp that connects two legs, there is now a design, PL SM-ACC-CLP-02, that connects four legs. Both clamps are easily mounted; tools are not required. The clamps absorb the horizontal forces on the stage floor and guarantee a close fit of the decks.



DEX-TO-DEX CLAMP

PL SM-ACC-CLP-03

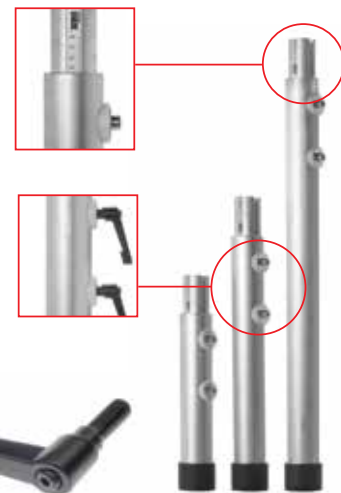
After your decks are mounted to the legs or support structure, they can be connected to each other using this clamp to ensure a sturdy connection between the decks. Using the clamp will prevent any unwanted vertical movement of your stage floor and will absorb the horizontal loading applied to the decks.



SKIRTING PLATE

One simple click and the profile is mounted to your deck! There are two click-on systems available: Skirting profile (PL SM-CT-ATT-(06/07/08/09)) and chair stopper / toe board profile (PL SM-CT-ATT-(11/12/13)). Each profile works with a simple click and lock system and requires no tools to secure into place. These timesaving products can be locked on from the top for quick and easy assembly. The skirting profile is developed to create an easy way to attach skirting to your decks, finishing the look of your platform or stage neatly. This profile is available in lengths of 470 mm, 970 mm and 1970 mm. A Velcro strip is delivered with this profile to facilitate the attachment of skirting. The skirting profile is developed to create an easy way to mount a toe board to your platform or staging area, creating a safe zone and preventing chairs from skidding off. This profile is available in lengths of 470 mm, 970 mm and 1970 mm.

CODE	DESCRIPTION
PL SM-CT-ATT-06 / 11	Skirting Plate 470mm / 470mm Chair Stopper/Skirting plate
PL SM-CT-ATT-07 / 12	Skirting Plate 970mm / 970mm Chair Stopper/Skirting plate
PL SM-CT-ATT-08 / 13	Skirting Plate 1970mm / 1970mm Chair Stopper/Skirting plate



TELESCOPIC LEGS

StageDex unique telescopic leg combines adjustable height and high loading capacity.

- Sturdy road-rugged mechanism
- Built-in tape measure for easy mounting

CODE	DESCRIPTION
PL SM-L-45/60-ADJ	450mm - 600mmH Telescopic Adjustable Leg
PL SM-L-60/90-ADJ	600mm - 900mmH Telescopic Adjustable Leg
PL SM-L-90/140-ADJ	900mm - 1400mmH Telescopic Adjustable Leg
PL SM-L-ACC-01	Crank for Telescopic Leg

EasyRail



Image courtesy of Metro Productions LTD New Zealand

EASYRAIL

System Description

Handrails and other accessories from the EasyRail range can easily be attached to the decks by inserting a spigot in a pre-bolted hole on each corner of the deck. This makes it possible to assemble the rails after the decks are built, as they are fully independent of the sides or the underlying constructions of the stage.

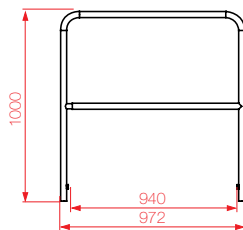
For Basic Line decks, StageDex has developed special adaptors for the spigots, which slide into the side profiles of the decks. EasyRail comes in two different versions, both in compliance with the applicable standards (DIN 4112 and DIN 15920-11).



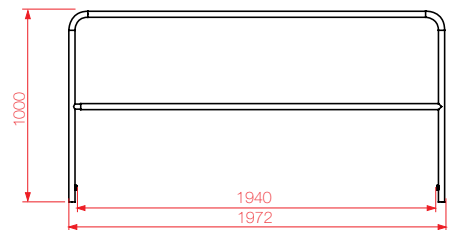
EasyRail mounted on Top Line deck.



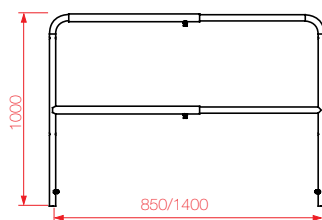
EasyRail mounted on Basic Line deck.



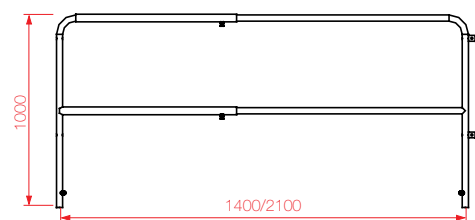
EasyRail railing. PL SM-RAIL-L100.



EasyRail railing. PL SM-RAIL-L200.



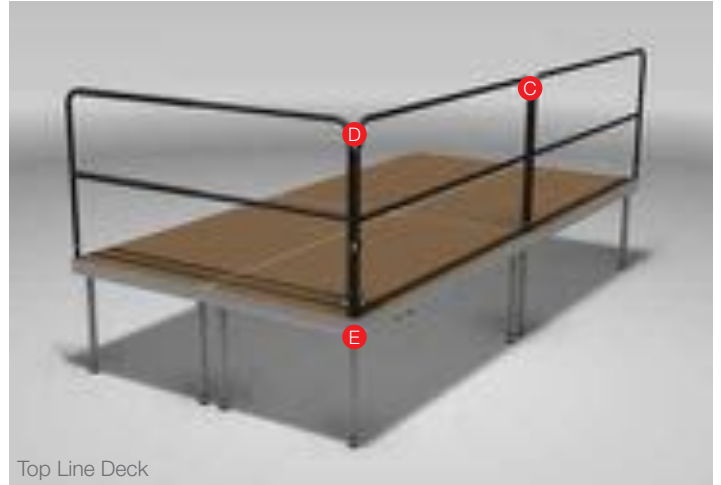
EasyRail railing. PL SM-RAIL-L85/140.



EasyRail railing. PL SM-RAIL-L140/210



Basic Line Deck



Top Line Deck

EASYRAIL 30KG/M

The light-duty version of the EasyRail can resist a horizontal loading of 30 to 60 kg/m. This railing type can be used for stages or areas with no public access. This is the case for most commonly used stages. For top line decks, the railing can be easily mounted on top of the decks by simply bolting a 26 mm spigot to the pre-drilled hole. The railing is available in a fixed and an adjustable type.

FIXED RAIL

PL SM-RAIL-L100

length 1000 mm

PL SM-RAIL-L200

length 2000 mm

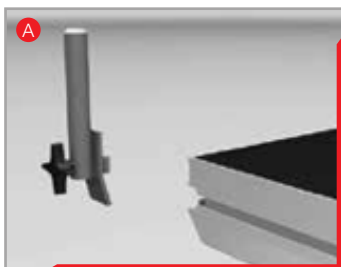
ADJUSTABLE RAIL

PL SM-RAIL-L85/140

adjustable from 850 to 1400 mm

PL SM-RAIL-L140/210

adjustable from 1400 to 2100 mm



PL SM-RAIL-ATT-04

Spigot for handrailing



PL SM-RAIL-ATT-04

Spigot for handrailing



PL SM-RAIL-ATT-04

Spigot for handrailing



PL SM-RAIL-CON

Railing connector



PL BM-M10X55

M10x55 Bolt with Wingnut and Washers



PL SM-RAIL-ATT-01

Spigot for handrailing



PL SM-RAIL-ATT-01

Spigot for handrailing

EasyRail



EASYRAIL 100KG/M

The heavy-duty version of EasyRail can resist a horizontal loading of 100 to 200 kg/m. This railing type can be used in all circumstances, including portions of the staging with public access, as the railing is in compliance with the applicable regulations. The railing can be easily mounted on top of the decks by simply bolting a 40 mm spigot to the pre-drilled hole, and then using the special railing adaptor.

The railing adaptor has an extra M12 hole drilled in front of the spigot hole. An extra spigot can be bolted in place here to provide a connection for a corner rail. This type of rail can only be used in combination with top line decks.

RAILING LENGTHS

PL SM-RAIL-H-L100	length 1000 mm
PL SM-RAIL-H-L200	length 2000 mm

CORNER PIECES

PL SM-RAIL-H-L093C	length 930 mm
PL SM-RAIL-H-L193C	length 1930 mm

ACCESSORIES

PL SM-RAIL-ATT-02	Spigot 40 mm for top line deck
PL SM-RAIL-ATT-03	Adaptor for 100 kg/m rail for top line deck



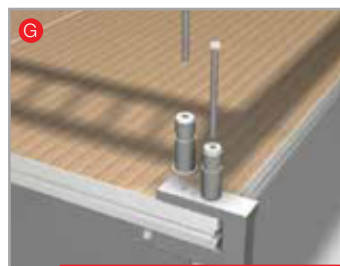
GT STG-STR-MB-PL

StageDex to Step Mounting Bracket



PL SM-RAIL-ATT-08

Spigot attachment



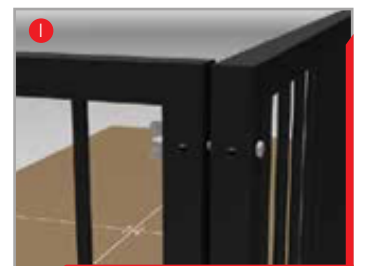
PL SM-RAIL-ATT-02

Spigot for handrail



PL SM-RAIL-ATT-09

Dual railing adaptor (SWL 100kg)



Handrail Connectors

M10x130 Bolt, M10 wingnut and washer

StageDex Dolly



Photo: Prolyte Group

STAGEDEX DOLLY

As an extension of its StageDex product range, Prolyte has added two dollies that are tailored to market requirements.

BUILT TO LAST

The sturdy flatbed dolly has been developed to transport 20 decks, simply stacked on top of one another. This flatbed dolly is ideal for use in larger venues and for large-scale rental.

- Galvanised steel frame
- Design allows nesting or tipping for empty storage or transport
- Easy to manoeuvre due to extra-large wheels
- Fitted with 2 swivels and 2 fixed castors for easy steering
- Integrated handles

SLIM FIT

The more compact and manageable 6-deck dolly is designed for use in smaller venues, theatres and hotels. Due to the upright position of the decks, this dolly is small enough to fit through any door.

- Galvanised steel frame
- Design allows nesting or tipping for empty storage or transport
- Fitted with 2 swivels and 2 fixed castors for easy steering
- Narrow width – at 60cm it fits through doors and is based on standard truck dimensions
- Pre-fabricated slots to stack the decks on the dolly
- Integrated handles

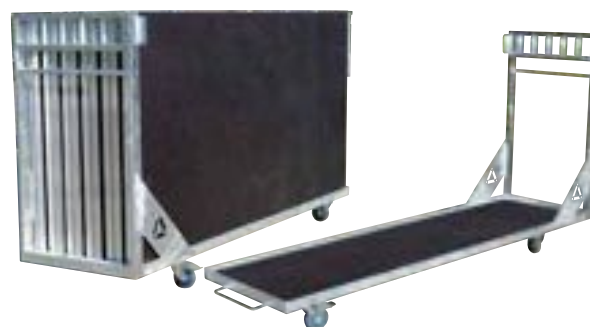
20 PIECE STAGEDEX DOLLY

Dimensions	L2080 x W1020 x H1276 mm
Weight (empty)	92.8 kg
Weight (loaded)	773 kg
Capacity	20 pcs StageDex 2x1
Code	PL SM-ACC-DOLLY-01

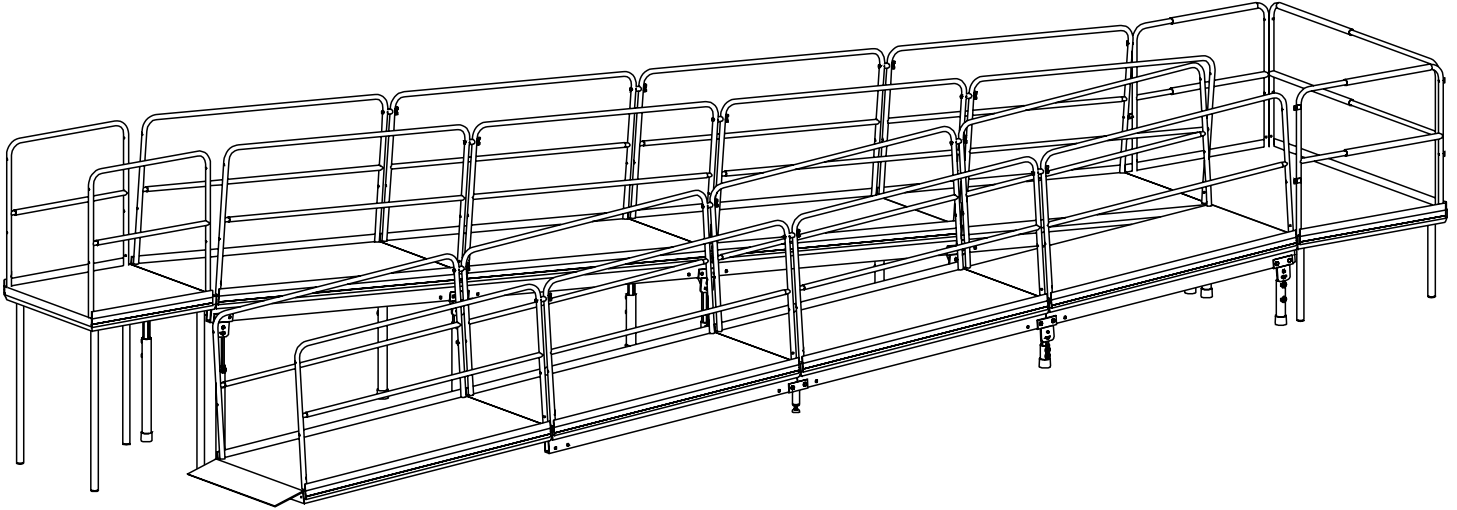


6 PIECE STAGEDEX DOLLY

Dimensions	L2075 x W600 x H1191 mm
Weight (empty)	60.4 kg
Weight (loaded)	265 kg
Capacity	6 pcs StageDex 2x1
Code	PL SM-ACC-DOLLY-02



Disabled Access Ramp



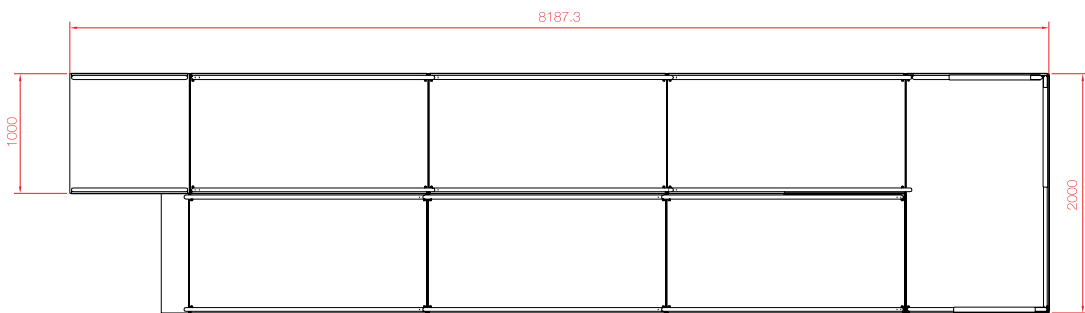
DISABLED ACCESS RAMP

Complete ramp, consisting of:

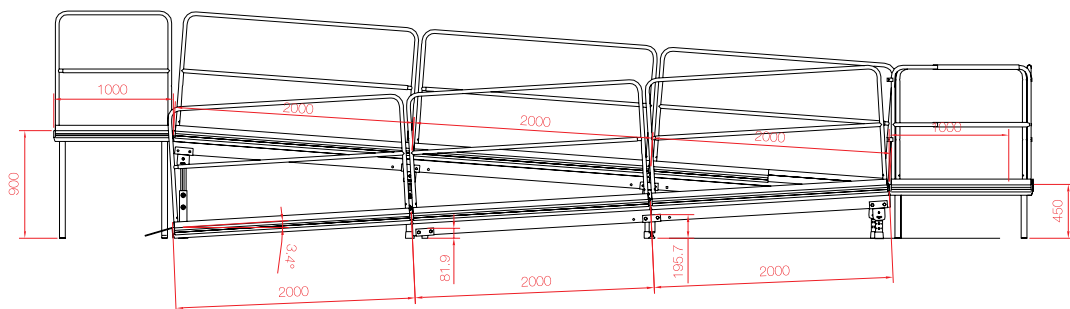
- Topline decks
- Legs and accessories
- UDL 750 kg/m²
- Complying with DIN and Australian standards

Available in 4 different heights: 300mmH, 600mmH, 900mmH and 1200mmH

Also available with handrail kits.



TOP VIEW



FRONT VIEW



STAGEDEX RAMP

Designed to further expand the possibilities of the StageDex range, the multipurpose StageDex Ramp offers a perfect solution for rolling equipment on and off stage, wheelchair access, or more creative applications such as car shows, walkways and fashion catwalks.

The StageDex Ramp comprises three basic elements:

- Standard StageDex staging
- Adjustable legs fitted with stabilizers (PL SM-RP-L-ADJ-...)
- Aluminium side profiles (PL SM-RP-BE2)

The specially designed side profiles have been engineered to absorb the forces from heavy loads, such as cars, meaning the StageDex Ramp can withstand up to 750 kg/m – the same allowable loading as standard StageDex staging.

The Ramp has a standard sloping angle of 7.5 degrees, but is adjustable between 0 and 22 degrees using a plate connected to the legs. This system ensures the resulting forces from loading are transferred at the correct angle into the leg. Notches on top of the profiles keep the staging in place once the ramp is built. A standard coupling profile allows the sloping section to be connected to staging at either end.

