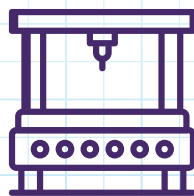
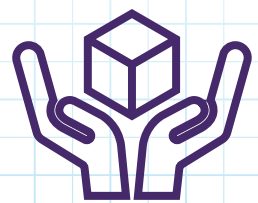


DESIGN*it*



MAKE*it*



PROTECT*it*



Sub Cases

Our Sub Cases are a range of hard plastic cases for those applications when you need your case to offer you protection for your valuable equipment. Made from polypropylene, the Sub Cases are very durable, high impact resistant, IP 67 (waterproof and dust proof), UV stabilised comparatively lightweight cases.

The IP67 rating can be a critical feature for protecting your gear when working close to on the water or in harsh outback conditions. Each case is filled with easy-cut foam sheets with egg shell foam lining in the lid. Of course, the Sub Case range would be especially suitable for custom foam fitouts cut and supplied to your requirements by the DQ design team using our in-house CNC machine.

- Material: TSU-1 Resin
- **INTERTEK Certified**
Waterproof IP67-IEC60529 edition 2.2 Clause 13.6 and Clause 14.2.7
Impact resistance test - ATA300 Revision 8.0 B-2-5
Immersion test - MIL-STD-810 F Notice 3 Method 512.4
Low temperature test - IEC60068-2-1 Sixth edition
High temperature test- IEC60068-2-2 Fifth edition



Product Code: SU S760-4840
Internal Dimensions: 763 x 483 x 402mm
External Dimensions: 851 x 556 x 429mm
Weight: 15.0kg

- Case Features**
- Lid Height: 76mm
 - Base Height: 326mm
 - Retractable extension handle
 - Castors: Yes



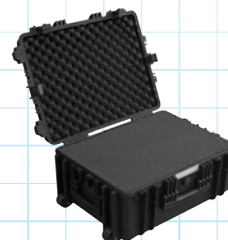
Product Code: SU S760-4830
Internal Dimensions: 761 x 483 x 300mm
External Dimensions: 851 x 555 x 328mm
Weight: 13.6kg

- Case Features**
- Lid Height: 73mm
 - Base Height: 227mm
 - Retractable extension handle
 - Castors: Yes



Product Code: SU S580-4433
Internal Dimensions: 582 x 437 x 320mm
External Dimensions: 670 x 508 x 375mm
Weight: 12.8kg

- Case Features**
- Lid Height: 55mm
 - Base Height: 273mm
 - Retractable extension handle
 - Castors: Yes



Product Code: SU S540-4025
Internal Dimensions: 540 x 405 x 245mm
External Dimensions: 610 x 468 x 292mm
Weight: 9.4kg

- Case Features**
- Lid Height: 55mm
 - Base Height: 190mm
 - Retractable extension handle
 - Castors: Yes



Product Code: SU S520-2719
Internal Dimensions: 521 x 276 x 191mm
External Dimensions: 552 x 348 x 248mm
Weight: 7.5kg

- Case Features**
- Lid Height: 45mm
 - Base Height: 140mm
 - Retractable extension handle
 - Castors: Yes



Product Code: SU S440-3418
Internal Dimensions: 445 x 343 x 187mm
External Dimensions: 475 x 412 x 217mm
Weight: 4.9kg

- Case Features**
- Lid Height: 45mm
 - Base Height: 142mm
 - Castors: No



Product Code: SU S440-3412
Internal Dimensions: 445 x 345 x 124mm
External Dimensions: 473 x 422 x 152mm
Weight: 4.2kg

Case Features

- Lid Height: 44mm
- Base Height: 80mm
- Castors: No



Product Code: SU S380-2718
Internal Dimensions: 380 x 270 x 178mm
External Dimensions: 410 x 338 x 206mm
Weight: 3.8kg

Case Features

- Lid Height: 44mm
- Base Height: 131mm
- Castors: No



Product Code: SU S330-3517
Internal Dimensions: 332 x 349 x 172mm
External Dimensions: 362 x 423 x 198mm
Weight: 3.9kg

Case Features

- Lid Height: 64mm
- Base Height: 100mm
- Castors: No



Product Code: SU S270-2012
Internal Dimensions: 277 x 200 x 123mm
External Dimensions: 308 x 269 x 150mm
Weight: 2.1kg

Case Features

- Lid Height: 30mm
- Base Height: 85mm
- Castors: No



Product Code: SU S260-1722
Internal Dimensions: 262 x 171 x 223mm
External Dimensions: 286 x 220 x 263
Weight: 1.8kg

Case Features

- Lid Height: 20mm
- Base Height: 193mm
- Castors: No



Product Code: SU S230-1815
Internal Dimensions: 240 x 182 x 155mm
External Dimensions: 267 x 233 x 179mm
Weight: 1.5kg

Case Features

- Lid Height: 30mm
- Base Height: 125mm
- Castors: No



Product Code: SU S220-1609
Internal Dimensions: 584 x 440 x 328mm
External Dimensions: 670 x 508 x 355mm
Weight: 1.0kg

Case Features

- Lid Height: 55mm
- Base Height: 273mm
- Castors: No



Product Code: SU S190-1213
Internal Dimensions: 190 x 124 x 135mm
External Dimensions: 217 x 180 x 155mm
Weight: 1.0kg

Case Features

- Lid Height: 20mm
- Base Height: 115mm
- Castors: No



Product Code: SU S190-1208
Internal Dimensions: 191 x 125 x 75mm
External Dimensions: 217 x 184 x 105mm
Weight: 0.8kg

Case Features

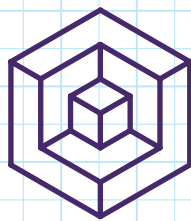
- Lid Height: 20mm
- Base Height: 55mm
- Castors: No



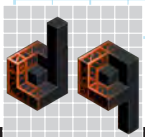
Product Code: SU S170-1305
Internal Dimensions: 169 x 132 x 44mm
External Dimensions: 217 x 184 x 60mm
Weight: 0.4kg

Case Features

- Lid Height: 11mm
- Base Height: 33mm
- Castors: No



WE'VE GOT *you* COVERED



DQ.COM.AU

DESIGN QUINTESSENCE | **SYD** (02) 9649 2266 • **MELB** (03) 9645 2266 • **BRIS** 0419 777 877 • **PER** 0419 898 999 | **EMAIL** INFO@DQ.COM.AU