

01.07.18



Unit 2, 15 Percy Street
Auburn NSW 2144

ATTENTION: Ian Wood

STRUCTURAL DESIGN CERTIFICATE

PROJECT: F34P Truss Structure
STRUCTURE: 8.5m (L) x 6.5m (W) x 4 m (H) F34P Truss
LOCATION: Multiple locations, Australia Wide Subject to Local Government Requirements
DURATION: April 2018—April 2020

We Event Engineering, being professional Structural Engineers within the meaning of the Building Code of Australia, confirm that we have been appointed as the engineers responsible for the Structural Certification of the above structure. We certify that we have reviewed the design as described herein and that this work was designed in accordance with the relevant provisions of the standard building codes, accepted engineering practice and principles and the design methods for *Temporary demountable structures* as specified in the *Guidance on procurement, design and use of temporary demountable structures* (Institution of Structural Engineers, 2017) subject to the design limitations listed overleaf.

We advise that the maximum design 3 second wind gust speed for the above structure is 25m/s, in accordance with the minimum requirements set forth by AS1170.2:2011. Should the wind speed measured on site approach this speed, the safety steps identified within this certificate must be implemented.

We note that this certification is effective only for the dates specified and that further review and certification will be required if the design is modified in any way. This certificate shall not be construed as relieving any other party of their responsibilities, liabilities or contractual obligations. This certificate is applicable only for this installation and relies upon all other risk assessments, WHS safety requirements and job safety statements associated with this project.

Alice Los
MIEAust
BEng (Civil & Architectural)
STRUCTURAL ENGINEER

Morgan Sheehy
MEng (Hons I) Tech Cert Eng (Civil)
MIEAust CPEng NER APEC Engineer IntPE(Aus)
RPEQ RBP Victoria EC 41049 (Civil Engineer)
SENIOR ENGINEER

01.07.18

1. REFERENCED STANDARDS

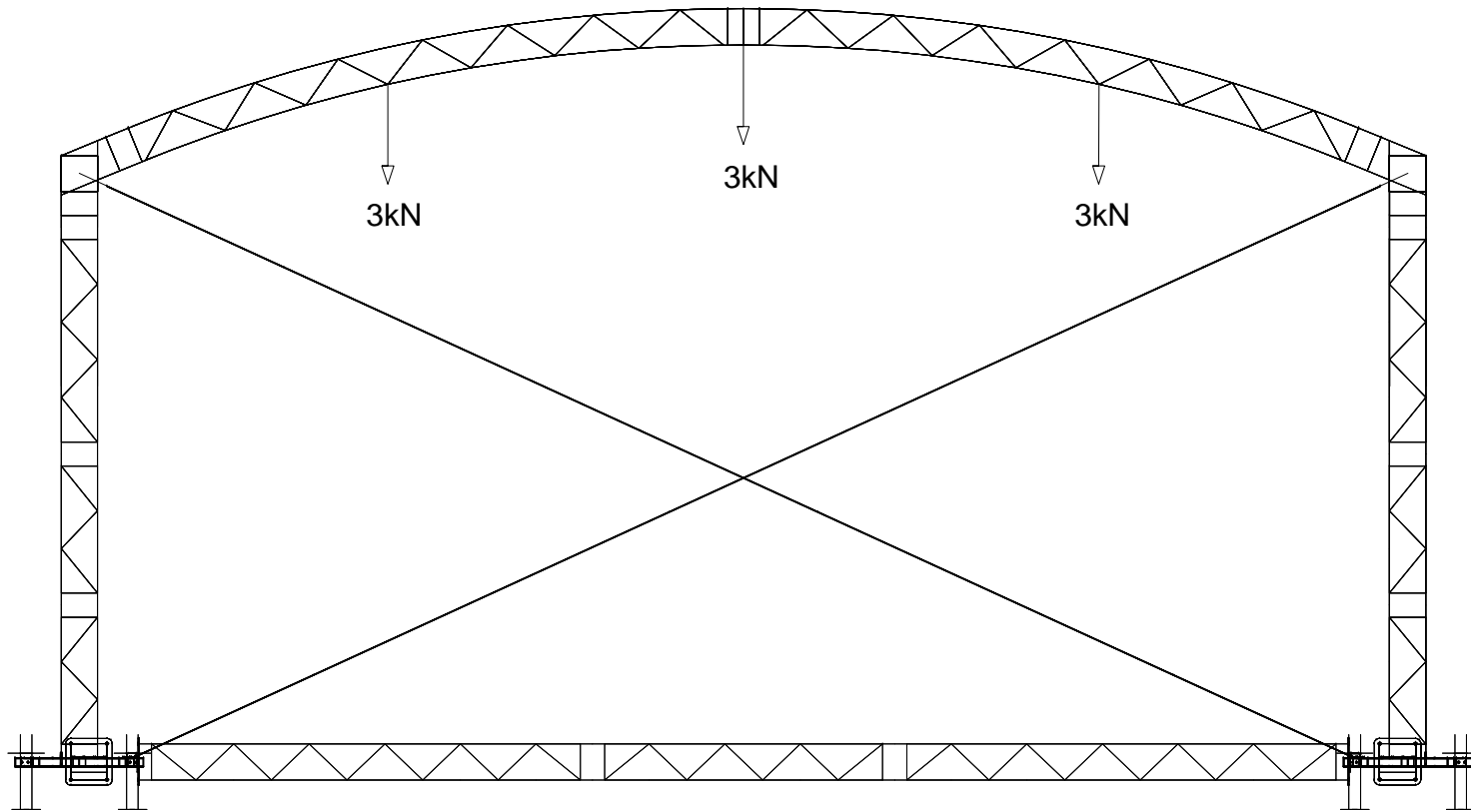
- 1.1. **ABCB:2015** Temporary Structures Standard;
- 1.2. **AS1170.0:2002** General Principles;
- 1.3. **AS1170.1:2002** Permanent, Imposed and Other Actions;
- 1.4. **AS1170.2:2011** Wind Actions;
- 1.5. **AS1664.1:1997** Aluminium Structures;
- 1.6. **AS4100:1998** Steel Structures;
- 1.7. **IStructE:2017** Temporary demountable structures.

2. REFERENCED DOCUMENTS

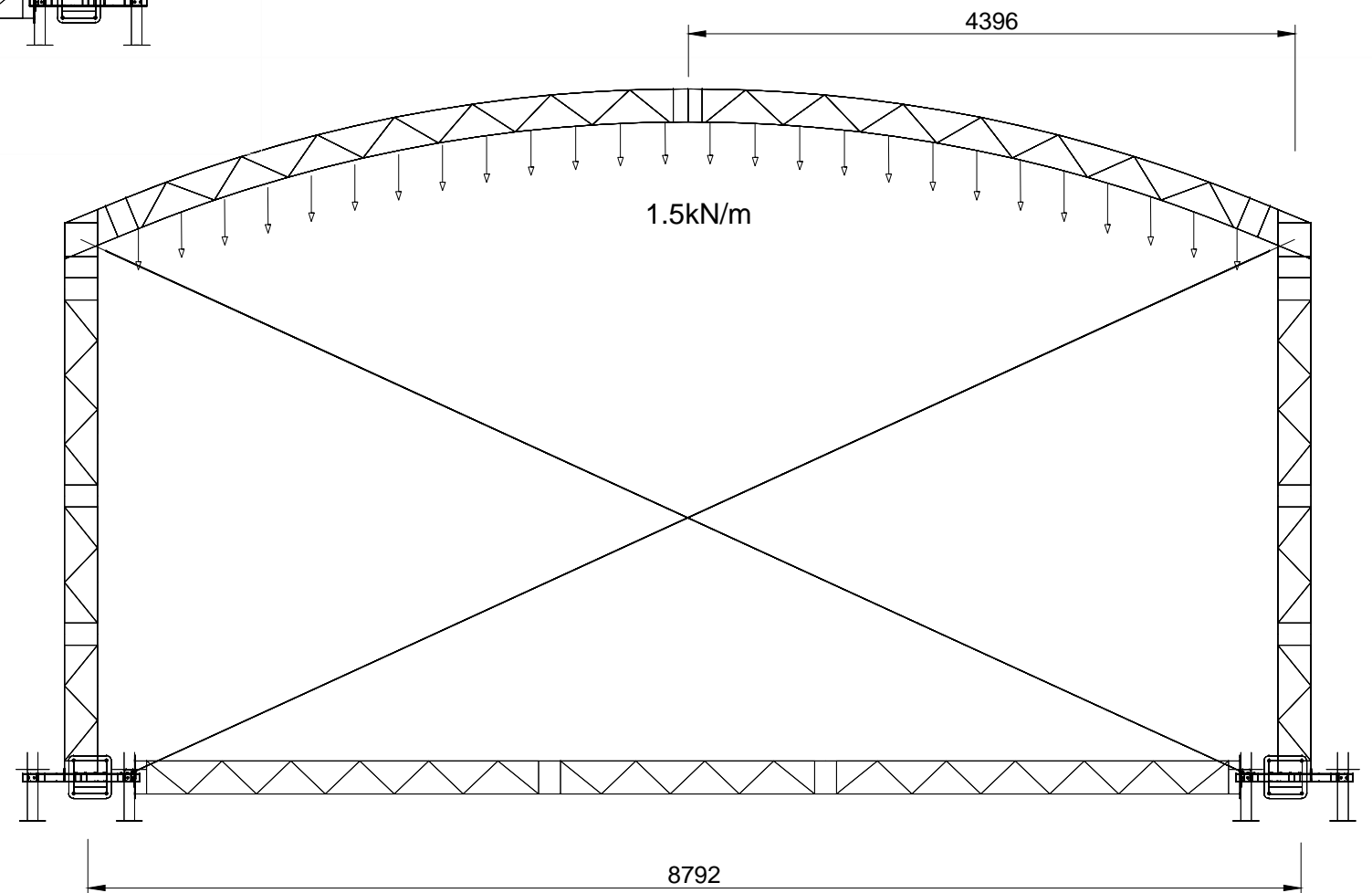
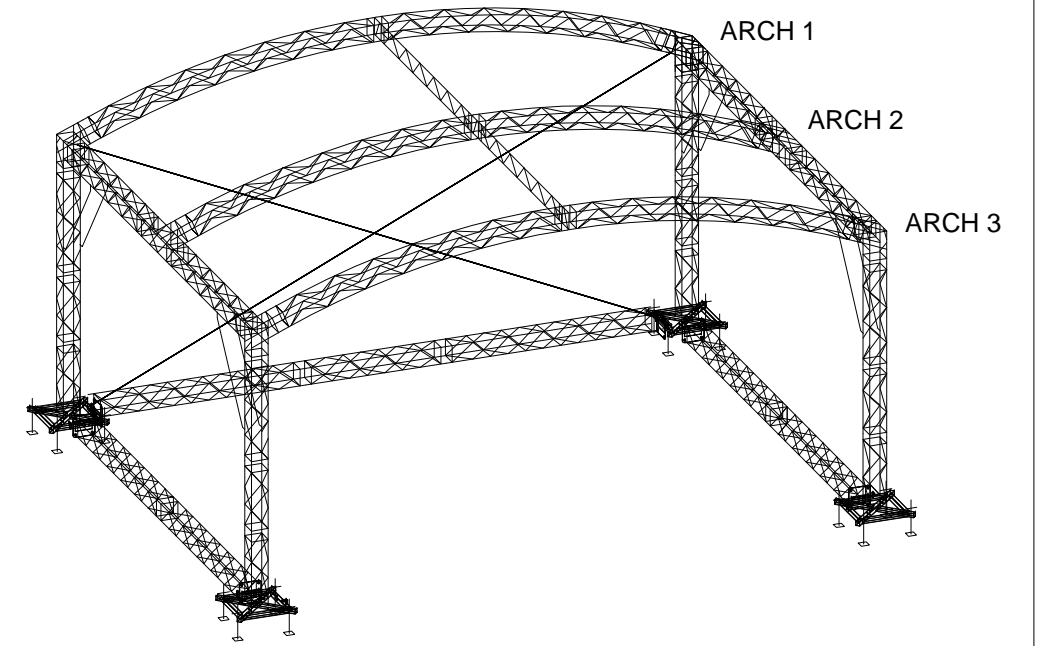
Issued By	Title Reference
Event Engineering	Engineering Report and Truss Stage Frame, Allowable Loading, Dwg No.: S01
Global Truss	F34P, Dwg. No.: F34P-8.5L6.5W4HA
	F34P Square Truss, Technical Data, F34P Data Sheet

3. DESIGN LIMITATIONS & REQUIREMENTS

- 3.1. **Maximum Loading:**
 - 3.1.1. **Dead:** 2No. Load cases as per attached drawing "Truss Stage Frame, Allowable Loading, Dwg No.: S01". For reference:
 - 3.1.1.1. **Load Case 1 - Point Load:** 3kN over 3No. points per arch;
 - 3.1.1.2. **Load Case 2 - Uniformly Distributed Load:** 1.5kN/m per arch;
 - 3.1.2. **Live:** No live loading permitted;
- 3.2. **Rigging:** Certified rigging technicians must install and sign-off all rigging;
- 3.3. **Catenary Loading:** No catenaries to be fixed to structure;
- 3.4. **Bearing Capacity:** Minimum bearing capacity shall be 100kpa;
- 3.5. **Spreader Plates:** To be provided beneath all truss supports;
- 3.6. **Workshop Drawings:** Shall be submitted for engineer's written approval prior to any additional fabrication or further modifications.
- 3.7. **Wind Management Plan:**
 - 3.7.1. The wind speed must be measured on site by an anemometer or the nearest weather station;
 - 3.7.2. If the wind speed approaches 20m/s, production crew must go on standby to implement an evacuation and create an exclusion zone;
 - 3.7.3. If the wind speed approaches 22m/s, all non-essential personnel must be evacuated and the exclusion zone must be enforced;
 - 3.7.4. If the wind speed approaches 25m/s, the structure must be abandoned and all personnel moved within a permanent structure of importance level 2-4 as specified within the BCA.



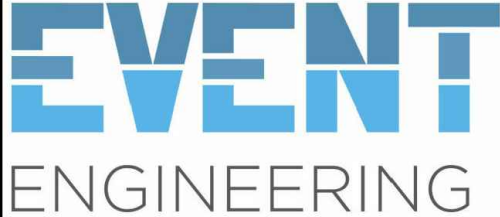
LOAD CASE 1:
ALLOWABLE POINT
LOADS PER ARCH
SCALE 1:50



LOAD CASE 2:
ALLOWABLE UNIFORMLY
DISTRIBUTED LOAD PER
ARCH
SCALE 1:50

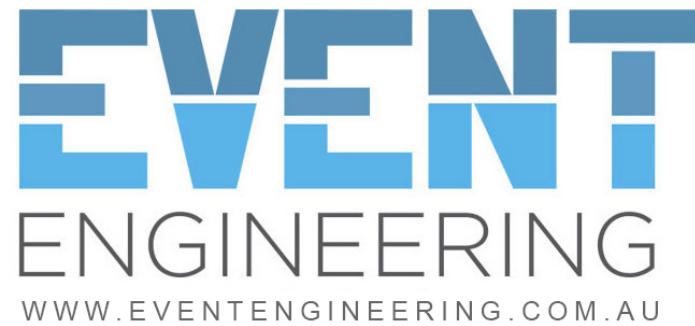
© 2018 EVENT ENGINEERING PTY LTD

COPYRIGHT IN THESE DESIGNS AND DRAWINGS IS VESTED IN EVENT ENGINEERING PTY LTD. THE DESIGN AND DETAILS SHOWN ON THIS DRAWING ARE SPECIFIC TO THIS PROJECT ONLY AND MAY NOT BE REPRODUCED IN WHOLE OR IN PART BY ANY MEANS OR BE USED FOR ANY OTHER PROJECT OR PURPOSE WITHOUT THE WRITTEN CONSENT OF EVENT ENGINEERING PTY LTD. THIS DRAWING SHALL NOT BE CHANGED ALTERED OR AMENDED BY ANY PARTY FOR ANY PURPOSE OTHER THAN BY EVENT ENGINEERING PTY LTD.

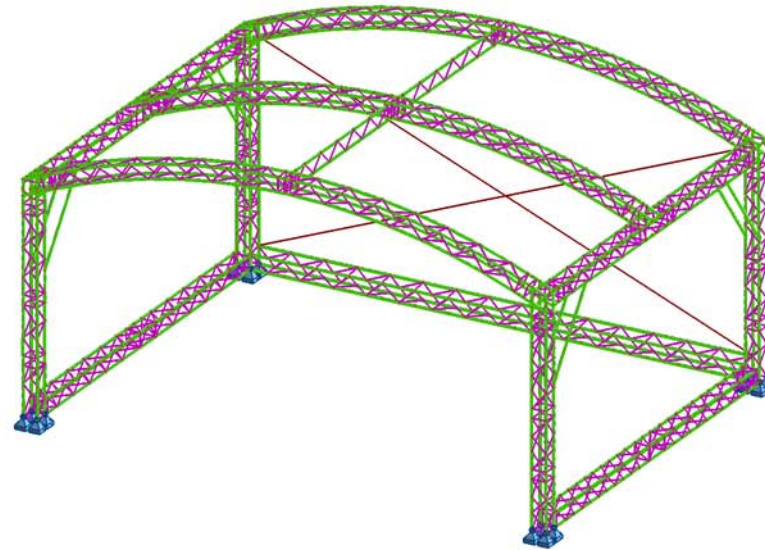
EVENT ENGINEERING PTY LTD www.eventengineering.com.au info@eventengineering.com.au	Rev.	Issue / Amendment	App.	Date		Client	DQ				
	A	FOR CERTIFICATION	Y	27.06.18		Project	STAGE TRUSS FRAME	Design	MS	Drawn	AL
						Title	ALLOWABLE LOADING	Scale at A3	1:50	Date	JUN 18
						Job No.	EE18 220	Drg.	S01	Rev.	A

F34P STAGE TRUSS

Engineering Results on Matrix Model

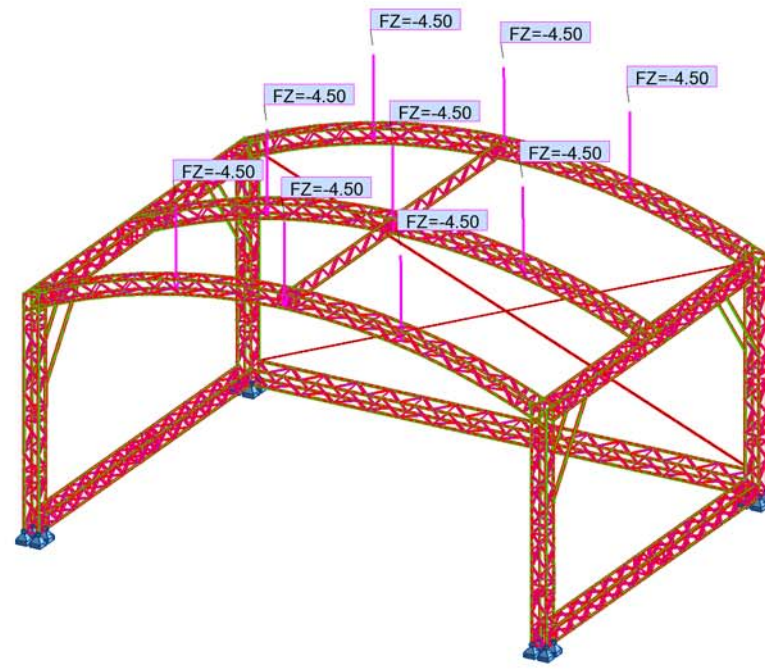


View - Cases: 1 (SELFWEIGHT)



- 5mm Steel Cable
- Alum CHS 20x2
- Alum CHS 50x3

View - Cases: 13 (1.2G +1.5Q Point)

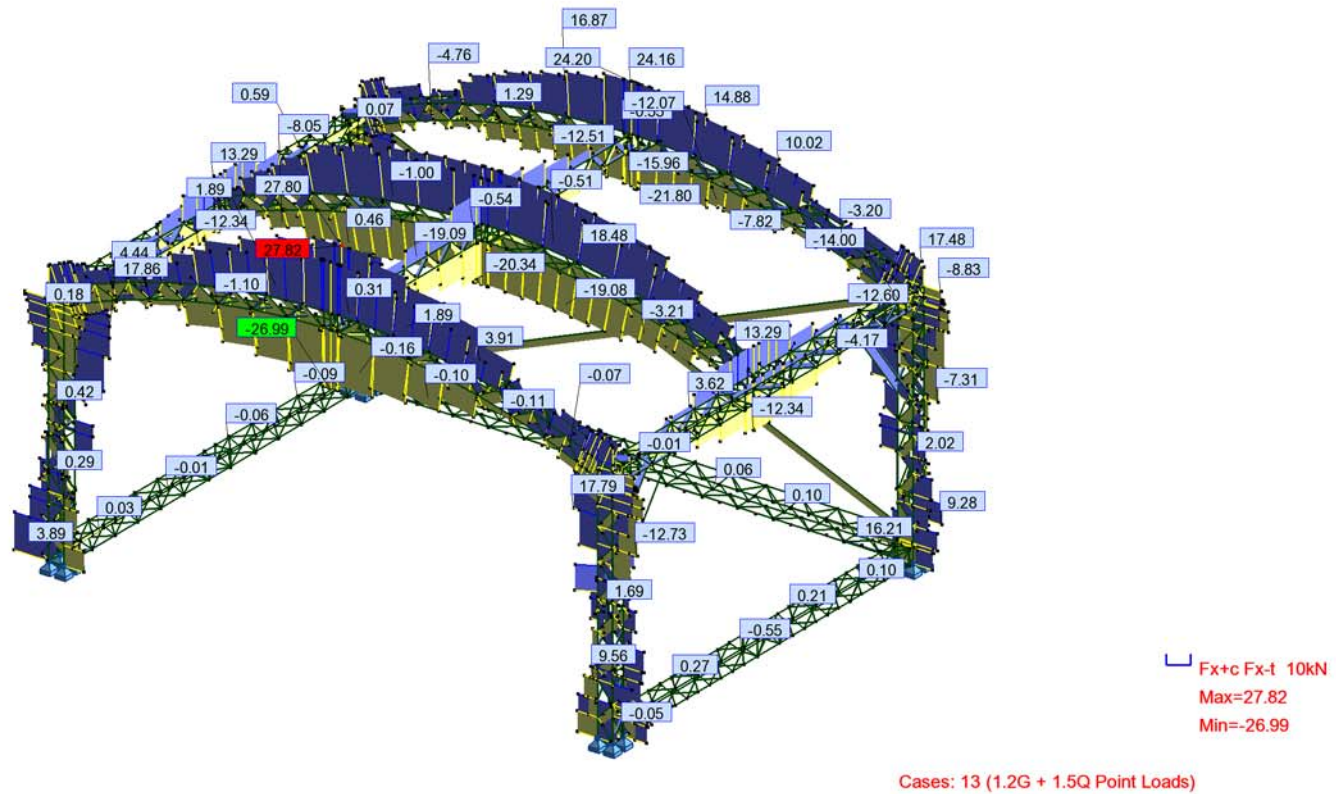


- 5mm Steel Cable
- Alum CHS 20x2
- Alum CHS 50x3

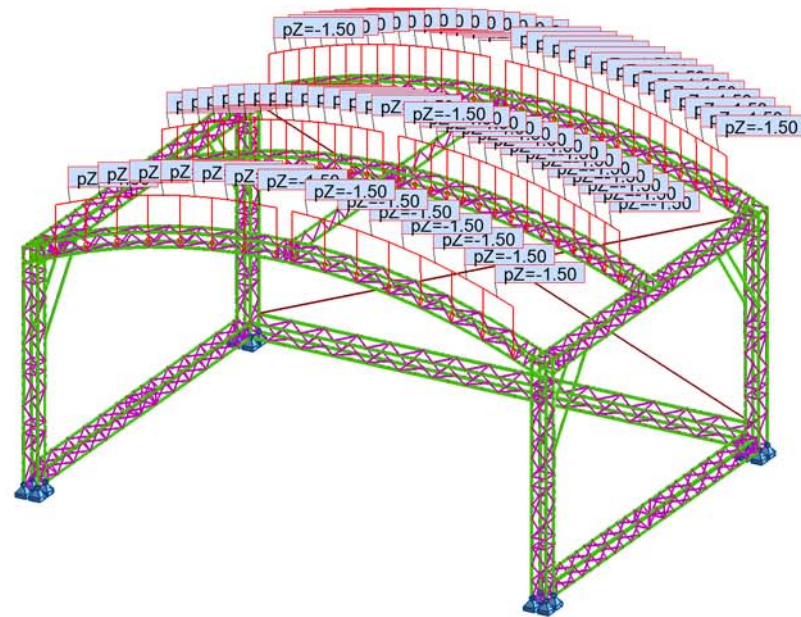
- PZ kG
↓ kN
- Cases: 13 (1.2G +1.5Q Point)



View - FX, Cases: 13 (1.2G + 1.5Q Point Loads)



View - Cases: 3 (DISTRIBUTED LOADS)



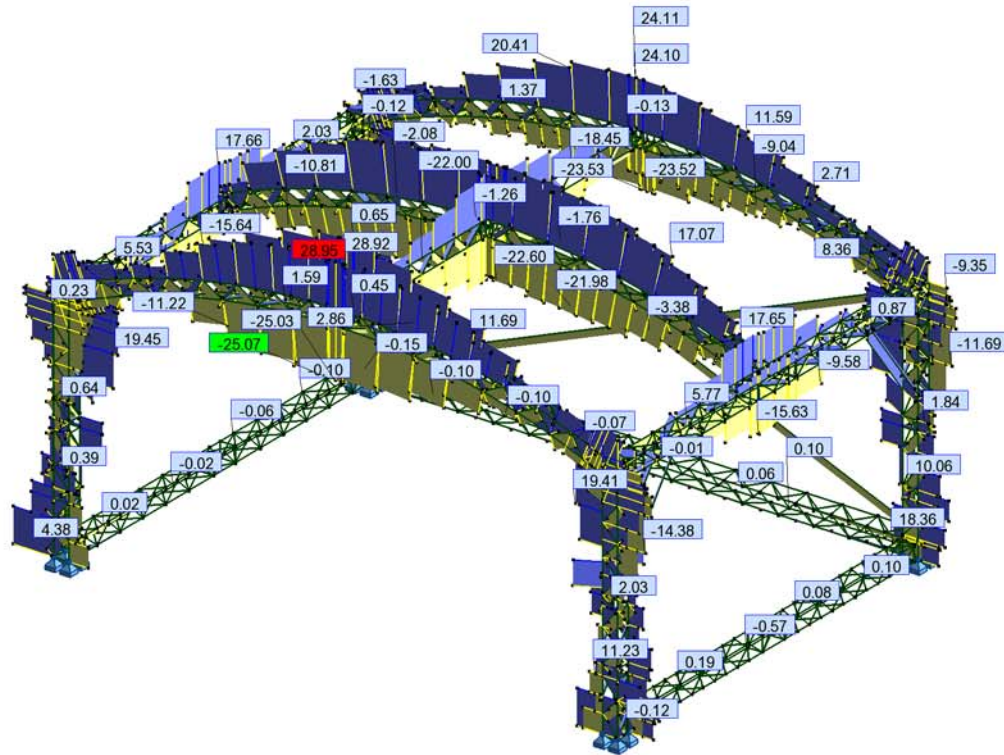
- 5mm Steel Cable
- Alum CHS 20x2
- Alum CHS 50x3



kN/m

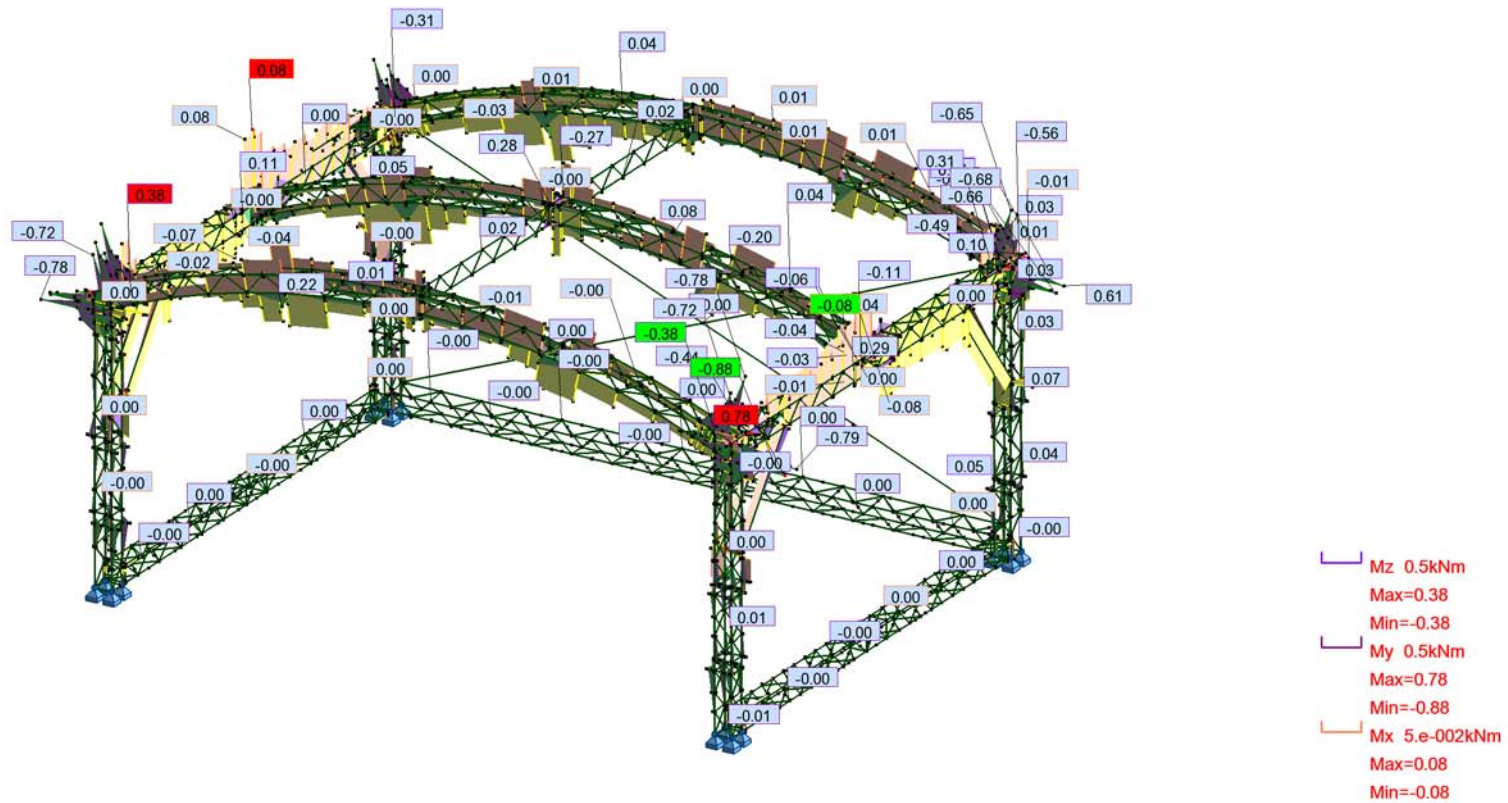
Cases: 3 (DISTRIBUTED LOADS)

View - FX, Cases: 14 (1.2G + 1.5Q UDL)



Cases: 14 (1.2G + 1.5Q UDL)

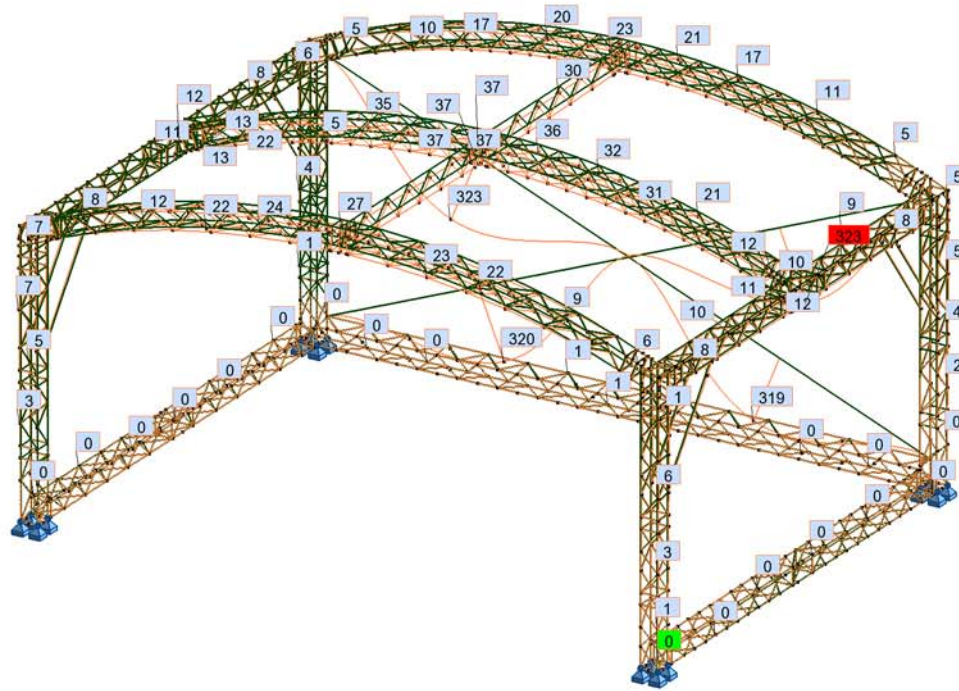
View - MX,MY,MZ, Cases: 13 (1.2G + 1.5Q Point Loads)



Cases: 13 (1.2G + 1.5Q Point Loads)



View - Exact deformation(s), Cases: 15 (G + Q Deflection)



Dis 200mm
Max=323

Cases: 15 (G + Q Deflection)

Reactions ULS: global extremes

	FX (kN)	FY (kN)	FZ (kN)	MX (kNm)	MY (kNm)	MZ (kNm)
MAX	5.08	2.34	46.80	0.00	0.00	0.00
Node	3753	54	3813	5073	2091	4095
Case	ULS/2	ULS/2	ULS/2	ULS/2	ULS/2	ULS/3
MIN	-5.08	-2.44	-30.97	-0.00	-0.00	-0.00
Node	3813	3813	3811	4095	9	3776
Case	ULS/2	ULS/2	ULS/2	ULS/2	ULS/3	ULS/2

Displacements SLS: global extremes

	UX (mm)	UY (mm)	UZ (mm)	RX (Rad)	RY (Rad)	RZ (Rad)
MAX	15	3	10	0.007	0.020	0.004
Node	111	320	201	4201	2247	2291
Case	SLS/1	SLS/1	SLS/1	SLS/1	SLS/1	SLS/1
MIN	-15	-2	-53	-0.009	-0.020	-0.004
Node	2196	114	2422	2424	163	207
Case	SLS/1	SLS/1	SLS/1	SLS/1	SLS/1	SLS/1

Member Forces ULS: envelope

Bar	FX (kN)	FY (kN)	FZ (kN)	MX (kNm)	MY (kNm)	MZ (kNm)
1 / MAX	-0.30	-0.01	8.42	0.01	0.04	0.06
Node	2281	2130	2130	2130	2281	2281
Case	ULS/11	ULS/11	ULS/2	ULS/2	ULS/2	ULS/2

1 / MIN	-17.78	-0.88	0.15	0.00	-0.98	-0.05
Node	2130	2130	2130	2130	2130	2130
Case	ULS/2	ULS/2	ULS/11	ULS/11	ULS/2	ULS/2
2 / MAX	0.07	0.03	0.06	-0.00	0.01	0.00
Node	1	1	1	1	2	1
Case	ULS/3	ULS/4	ULS/2	ULS/11	ULS/2	ULS/4
2 / MIN	-0.12	-0.02	0.00	-0.00	-0.01	-0.00
Node	2	1	2	1	1	2
Case	ULS/4	ULS/3	ULS/11	ULS/2	ULS/2	ULS/4
3 / MAX	0.54	0.00	0.00	0.00	0.00	0.00
Node	4902	4897	4897	4897	4897	4897
Case	ULS/1	ULS/2	3	ULS/2	ULS/1	ULS/2
3 / MIN	-0.22	-0.00	-0.01	0.00	-0.00	-0.00
Node	4897	4897	4902	4897	4897	4897
Case	3	ULS/1	ULS/1	ULS/11	3	ULS/1
4 / MAX	0.53	0.00	0.01	0.00	0.00	0.00
Node	4902	4902	4902	4902	4898	4898
Case	ULS/1	3	ULS/1	ULS/2	ULS/1	ULS/1
4 / MIN	-0.26	-0.01	-0.00	0.00	-0.00	-0.00
Node	4902	4902	4902	4902	4898	4898
Case	3	ULS/1	3	ULS/11	3	3
5 / MAX	0.53	0.00	0.02	0.00	0.00	0.00
Node	4896	4896	4896	4896	4900	4896
Case	ULS/1	3	ULS/2	ULS/2	ULS/2	ULS/2
5 / MIN	-0.74	-0.00	-0.01	0.00	-0.00	-0.00
Node	4896	4896	4900	4896	4896	4896
Case	ULS/2	ULS/1	ULS/1	ULS/11	ULS/2	ULS/1
6 / MAX	0.55	0.00	0.01	0.00	0.00	0.00
Node	4900	4900	4900	4900	4900	2090

Case	ULS/1	3	ULS/1	ULS/2	ULS/2	ULS/1
6 / MIN	-0.61	-0.00	-0.02	0.00	-0.00	-0.00
Node	4900	4900	2090	4900	2090	2090
Case	ULS/2	ULS/1	ULS/2	ULS/11	ULS/2	3
7 / MAX	-0.02	0.00	0.00	0.00	0.00	0.00
Node	8	8	8	8	8	8
Case	2	ULS/2	ULS/2	3	ULS/1	ULS/2
7 / MIN	-0.09	0.00	-0.00	-0.00	-0.00	-0.00
Node	11	8	11	8	8	11
Case	ULS/2	ULS/11	ULS/1	ULS/1	ULS/2	ULS/2
8 / MAX	0.09	0.00	0.00	0.00	0.00	0.00
Node	12	11	11	11	12	12
Case	ULS/2	ULS/1	ULS/1	ULS/2	ULS/1	ULS/2
8 / MIN	0.02	-0.00	-0.00	-0.00	-0.00	-0.00
Node	11	11	12	11	11	11
Case	2	ULS/2	ULS/1	ULS/1	ULS/2	ULS/2
9 / MAX	-0.01	0.00	0.00	0.00	0.00	0.00
Node	12	12	12	12	13	12
Case	2	ULS/2	ULS/2	ULS/2	ULS/2	ULS/2
9 / MIN	-0.10	-0.00	-0.00	0.00	-0.00	-0.00
Node	13	12	13	12	12	13
Case	ULS/2	ULS/1	ULS/1	ULS/11	ULS/2	ULS/2
10 / MAX	0.11	0.00	0.00	0.00	0.00	0.00
Node	14	13	13	13	14	14
Case	ULS/2	ULS/1	ULS/1	ULS/2	ULS/1	ULS/2
10 / MIN	0.01	-0.00	-0.00	0.00	-0.00	-0.00
Node	13	13	14	13	13	13
Case	2	ULS/2	ULS/4	ULS/11	ULS/2	ULS/2
11 / MAX	-0.01	0.01	0.00	0.00	0.00	0.00

Node	14	14	14	14	15	14
Case	2	ULS/2	ULS/2	ULS/2	ULS/2	ULS/2
11 / MIN	-0.10	-0.00	-0.00	0.00	-0.00	-0.00
Node	15	14	15	14	14	15
Case	ULS/2	ULS/1	ULS/1	ULS/11	ULS/2	ULS/2
12 / MAX	0.11	-0.00	0.00	0.00	0.00	0.00
Node	16	15	15	15	16	16
Case	ULS/1	ULS/11	ULS/1	ULS/1	ULS/1	ULS/2
12 / MIN	-0.00	-0.01	-0.00	-0.00	-0.00	-0.00
Node	15	15	15	15	15	15
Case	2	ULS/2	3	ULS/2	ULS/2	ULS/2
13 / MAX	0.01	0.01	0.00	0.00	0.00	0.00
Node	16	16	16	16	17	16
Case	2	ULS/2	ULS/1	ULS/2	ULS/1	ULS/2
13 / MIN	-0.12	0.00	-0.00	0.00	-0.00	-0.00
Node	17	16	17	16	16	17
Case	ULS/1	ULS/11	ULS/2	ULS/11	ULS/1	ULS/2
14 / MAX	0.14	-0.00	0.00	-0.00	0.00	0.00
Node	18	17	17	17	18	18
Case	ULS/1	ULS/11	ULS/1	ULS/11	ULS/1	ULS/2
14 / MIN	-0.01	-0.01	-0.00	-0.00	-0.00	-0.00
Node	17	17	18	17	17	17
Case	2	ULS/2	ULS/2	ULS/2	ULS/1	ULS/2
15 / MAX	0.02	0.01	0.00	0.00	0.00	0.00
Node	18	18	18	18	19	18
Case	2	ULS/2	ULS/2	ULS/2	ULS/2	ULS/2
15 / MIN	-0.15	0.00	0.00	0.00	-0.00	-0.00
Node	19	18	19	18	18	19
Case	ULS/1	ULS/11	ULS/11	ULS/11	ULS/2	ULS/2

16 / MAX	0.16	-0.00	0.00	-0.00	0.00	0.00
Node	21	19	19	19	21	21
Case	ULS/1	ULS/11	ULS/2	ULS/11	ULS/2	ULS/2
16 / MIN	-0.07	-0.01	0.00	-0.00	-0.00	-0.00
Node	19	19	21	19	19	19
Case	3	ULS/2	ULS/11	ULS/2	ULS/2	ULS/2
17 / MAX	-0.00	0.01	0.01	0.00	0.00	0.00
Node	22	22	22	22	21	22
Case	2	ULS/2	ULS/2	ULS/2	ULS/2	ULS/2
17 / MIN	-0.17	0.00	-0.00	0.00	-0.00	-0.00
Node	22	22	21	22	22	21
Case	ULS/1	ULS/11	ULS/1	ULS/11	ULS/2	ULS/2
18 / MAX	0.01	0.00	0.00	0.00	0.00	0.00
Node	23	23	23	23	23	23
Case	3	ULS/1	ULS/1	ULS/2	ULS/2	ULS/1
18 / MIN	-0.20	-0.00	-0.01	0.00	-0.00	-0.00
Node	23	23	24	23	24	24
Case	ULS/1	3	ULS/2	ULS/11	ULS/2	ULS/1
19 / MAX	0.30	-0.00	0.00	-0.00	0.00	0.00
Node	24	24	24	24	25	25
Case	ULS/2	ULS/11	ULS/2	ULS/11	ULS/2	ULS/2
19 / MIN	0.05	-0.01	-0.00	-0.00	-0.00	-0.00
Node	24	24	25	24	24	24
Case	2	ULS/2	ULS/1	ULS/2	ULS/2	ULS/2
20 / MAX	-0.01	0.01	0.00	0.00	0.00	0.00
Node	25	25	25	25	25	25
Case	3	ULS/2	ULS/2	ULS/2	ULS/1	ULS/2
20 / MIN	-0.17	0.00	-0.00	0.00	-0.00	-0.00
Node	25	25	26	25	25	26

Case	ULS/2	ULS/11	ULS/1	2	ULS/2	ULS/2
21 / MAX	0.14	-0.00	0.00	-0.00	0.00	0.00
Node	26	26	26	26	26	27
Case	ULS/1	ULS/11	ULS/2	ULS/11	ULS/1	ULS/2
21 / MIN	0.00	-0.01	-0.00	-0.00	-0.00	-0.00
Node	26	26	27	26	27	26
Case	3	ULS/2	ULS/1	ULS/2	ULS/2	ULS/2
22 / MAX	-0.00	0.01	0.00	0.00	0.00	0.00
Node	27	27	27	27	27	27
Case	3	ULS/2	ULS/1	ULS/2	ULS/2	ULS/2
22 / MIN	-0.12	0.00	-0.00	0.00	-0.00	-0.00
Node	27	27	28	27	28	28
Case	ULS/2	ULS/11	ULS/2	ULS/11	ULS/2	ULS/2
23 / MAX	0.10	-0.00	0.00	0.00	0.00	0.00
Node	28	28	28	28	29	29
Case	ULS/1	ULS/11	ULS/2	ULS/2	ULS/2	ULS/2
23 / MIN	-0.01	-0.01	-0.00	-0.00	-0.00	-0.00
Node	28	28	29	28	28	28
Case	3	ULS/2	ULS/1	ULS/1	ULS/2	ULS/2
24 / MAX	0.01	0.01	0.00	0.00	0.00	0.00
Node	29	29	29	29	29	29
Case	3	ULS/2	ULS/1	ULS/2	ULS/2	ULS/2
24 / MIN	-0.08	0.00	-0.00	0.00	-0.00	-0.00
Node	29	29	30	29	30	30
Case	ULS/1	ULS/11	ULS/2	ULS/11	ULS/2	ULS/2
25 / MAX	0.07	-0.00	0.00	0.00	0.00	0.00
Node	30	30	30	30	31	31
Case	ULS/1	ULS/11	ULS/2	ULS/2	ULS/2	ULS/2
25 / MIN	-0.02	-0.00	-0.00	-0.00	-0.00	-0.00

Node	30	30	31	30	30	30
Case	3	ULS/2	ULS/1	ULS/1	ULS/2	ULS/2
26 / MAX	0.02	0.00	0.00	0.00	0.00	0.00
Node	31	31	31	31	31	31
Case	3	ULS/2	ULS/1	ULS/2	ULS/2	ULS/2
26 / MIN	-0.05	0.00	-0.00	-0.00	-0.00	-0.00
Node	31	31	32	31	32	32
Case	ULS/1	ULS/11	ULS/2	ULS/1	ULS/2	ULS/2
27 / MAX	0.04	-0.00	0.00	0.00	0.00	0.00
Node	32	32	32	32	33	33
Case	ULS/1	ULS/11	ULS/2	ULS/2	ULS/2	ULS/2
27 / MIN	-0.04	-0.00	-0.00	-0.00	-0.00	-0.00
Node	33	32	33	32	32	32
Case	ULS/2	ULS/2	ULS/1	ULS/1	ULS/2	ULS/2
28 / MAX	0.04	0.00	0.00	-0.00	0.00	0.00
Node	10	33	33	33	10	33
Case	ULS/2	ULS/2	ULS/1	ULS/11	ULS/1	ULS/2
28 / MIN	-0.02	0.00	-0.00	-0.00	-0.00	-0.00
Node	33	33	10	33	10	10
Case	ULS/1	3	ULS/2	ULS/2	ULS/2	ULS/2
29 / MAX	-0.01	0.00	0.00	0.00	0.00	0.00
Node	10	10	10	10	34	10
Case	ULS/11	ULS/2	ULS/2	ULS/1	ULS/2	ULS/2
29 / MIN	-0.13	0.00	-0.00	-0.00	-0.00	-0.00
Node	10	10	34	10	10	34
Case	ULS/2	2	ULS/1	ULS/2	ULS/2	ULS/2
30 / MAX	0.12	0.00	0.00	0.00	0.00	0.00
Node	34	34	34	34	34	32
Case	ULS/2	3	ULS/1	3	ULS/2	ULS/1

30 / MIN	0.00	-0.00	-0.00	-0.00	-0.00	-0.00
Node	34	34	32	34	32	34
Case	ULS/11	ULS/1	ULS/2	ULS/1	ULS/2	ULS/1
31 / MAX	-0.00	0.00	0.00	0.00	0.00	0.00
Node	32	32	32	32	35	32
Case	ULS/11	ULS/2	ULS/2	ULS/1	ULS/2	ULS/2
31 / MIN	-0.12	0.00	-0.00	-0.00	-0.00	-0.00
Node	32	32	35	32	32	35
Case	ULS/2	2	ULS/1	ULS/2	ULS/2	ULS/2
32 / MAX	0.14	0.00	0.00	-0.00	0.00	0.00
Node	35	35	35	35	35	30
Case	ULS/2	ULS/2	ULS/1	3	ULS/2	ULS/1
32 / MIN	0.00	-0.00	-0.01	-0.00	-0.00	-0.00
Node	35	35	30	35	30	30
Case	ULS/11	ULS/1	ULS/2	ULS/2	ULS/2	ULS/2
33 / MAX	-0.01	0.00	0.01	0.00	0.00	0.00
Node	30	30	30	30	36	30
Case	ULS/11	ULS/2	ULS/2	ULS/1	ULS/2	ULS/2
33 / MIN	-0.15	0.00	-0.00	-0.00	-0.00	-0.00
Node	30	30	36	30	30	36
Case	ULS/2	ULS/11	ULS/1	ULS/2	ULS/2	ULS/2
34 / MAX	0.17	0.00	0.00	-0.00	0.00	0.00
Node	36	36	36	36	36	36
Case	ULS/2	ULS/2	ULS/1	3	ULS/2	ULS/2
34 / MIN	0.01	-0.00	-0.01	-0.00	-0.00	-0.00
Node	36	36	28	36	28	28
Case	ULS/11	ULS/1	ULS/2	ULS/2	ULS/2	ULS/2
35 / MAX	-0.01	0.00	0.01	0.00	0.00	0.00
Node	28	28	28	28	37	28

Case	ULS/11	ULS/2	ULS/2	ULS/1	ULS/2	ULS/2
35 / MIN	-0.19	0.00	0.00	-0.00	-0.00	-0.00
Node	28	28	37	28	28	37
Case	ULS/2	ULS/11	ULS/11	ULS/2	ULS/2	ULS/2
36 / MAX	0.22	0.00	-0.00	0.00	0.00	0.00
Node	37	37	37	37	37	37
Case	ULS/2	ULS/2	ULS/11	3	ULS/2	ULS/2
36 / MIN	0.01	0.00	-0.01	-0.00	-0.00	-0.00
Node	37	37	26	37	26	26
Case	ULS/11	ULS/11	ULS/2	ULS/3	ULS/2	ULS/2
37 / MAX	-0.01	0.00	0.01	-0.00	0.00	0.00
Node	26	26	26	26	38	26
Case	ULS/11	ULS/2	ULS/2	2	ULS/2	ULS/2
37 / MIN	-0.25	-0.00	0.00	-0.00	-0.00	-0.00
Node	26	26	38	26	26	26
Case	ULS/2	ULS/1	ULS/11	ULS/2	ULS/2	ULS/1
38 / MAX	0.30	0.00	-0.00	0.00	0.00	0.00
Node	38	38	38	38	38	38
Case	ULS/2	ULS/2	ULS/11	ULS/2	ULS/2	ULS/2
38 / MIN	0.01	0.00	-0.01	-0.00	-0.00	-0.00
Node	38	38	24	38	24	24
Case	ULS/11	2	ULS/2	ULS/1	ULS/2	ULS/2
39 / MAX	-0.00	0.00	0.01	0.00	0.00	0.00
Node	24	24	24	24	39	24
Case	ULS/11	ULS/2	ULS/2	ULS/2	ULS/2	ULS/2
39 / MIN	-0.31	-0.00	0.00	-0.00	-0.00	-0.00
Node	24	24	39	24	24	39
Case	ULS/2	ULS/1	ULS/11	ULS/1	ULS/2	ULS/2
40 / MAX	0.08	0.00	0.00	0.00	0.00	0.00

Node	6	6	6	6	11	11
Case	ULS/2	3	ULS/2	ULS/1	ULS/2	ULS/1
40 / MIN	0.02	-0.00	-0.00	-0.00	-0.00	-0.00
Node	11	6	11	6	6	6
Case	ULS/11	ULS/1	ULS/1	ULS/2	ULS/2	ULS/1
41 / MAX	-0.00	0.00	0.00	0.00	0.00	0.00
Node	41	41	11	11	11	41
Case	ULS/11	ULS/1	ULS/1	3	ULS/2	ULS/2
41 / MIN	-0.09	-0.00	-0.00	-0.00	-0.00	-0.00
Node	11	11	41	11	41	11
Case	ULS/2	ULS/2	ULS/2	ULS/3	ULS/2	ULS/2
42 / MAX	0.10	0.00	0.00	0.00	0.00	0.00
Node	41	41	41	41	13	13
Case	ULS/2	3	ULS/2	ULS/1	ULS/2	ULS/1
42 / MIN	0.00	-0.00	-0.00	-0.00	-0.00	-0.00
Node	13	41	13	41	41	41
Case	ULS/11	ULS/1	ULS/1	ULS/2	ULS/2	ULS/1
43 / MAX	-0.00	0.00	0.00	-0.00	0.00	0.00
Node	43	43	13	13	13	43
Case	ULS/11	ULS/1	ULS/1	3	ULS/2	ULS/2
43 / MIN	-0.11	-0.00	-0.00	-0.00	-0.00	-0.00
Node	13	13	43	13	43	13
Case	ULS/2	ULS/2	ULS/2	ULS/2	ULS/2	ULS/2
44 / MAX	0.12	0.00	0.01	0.00	0.00	0.00
Node	43	43	43	43	15	15
Case	ULS/2	3	ULS/2	ULS/1	ULS/2	ULS/1
44 / MIN	0.01	-0.00	-0.00	-0.00	-0.00	-0.00
Node	15	43	15	43	43	43
Case	ULS/11	ULS/1	ULS/1	ULS/2	ULS/2	ULS/1

45 / MAX	-0.00	0.00	0.00	0.00	0.00	0.00
Node	45	45	15	15	15	45
Case	ULS/11	ULS/1	ULS/1	3	ULS/2	ULS/2
45 / MIN	-0.14	-0.00	-0.01	-0.00	-0.00	-0.00
Node	15	15	45	15	45	15
Case	ULS/2	ULS/2	ULS/2	ULS/3	ULS/2	ULS/2
46 / MAX	0.16	0.00	0.01	-0.00	0.00	0.00
Node	45	17	45	45	17	17
Case	ULS/2	ULS/2	ULS/2	ULS/11	ULS/2	ULS/1
46 / MIN	0.00	-0.00	-0.00	-0.00	-0.00	-0.00
Node	17	45	17	45	45	17
Case	ULS/11	ULS/1	ULS/1	ULS/2	ULS/2	ULS/2
47 / MAX	-0.01	0.00	0.00	-0.00	0.00	0.00
Node	47	47	17	17	17	47
Case	ULS/11	ULS/1	ULS/1	ULS/11	ULS/2	ULS/2
47 / MIN	-0.21	-0.00	-0.01	-0.00	-0.00	-0.00
Node	17	17	47	17	47	17
Case	ULS/2	ULS/2	ULS/2	ULS/2	ULS/2	ULS/2
48 / MAX	0.22	-0.00	0.01	0.00	0.00	0.00
Node	47	19	47	47	19	19
Case	ULS/2	ULS/11	ULS/2	ULS/2	ULS/2	ULS/2
48 / MIN	0.01	-0.00	0.00	-0.00	-0.00	-0.00
Node	19	47	19	47	47	47
Case	ULS/11	ULS/2	ULS/11	ULS/1	ULS/2	ULS/2
49 / MAX	-0.00	-0.00	0.00	0.00	0.00	0.00
Node	48	19	19	19	19	48
Case	ULS/11	ULS/11	ULS/2	ULS/2	ULS/1	ULS/2
49 / MIN	-0.20	-0.00	-0.00	0.00	-0.00	-0.00
Node	19	19	48	19	19	19

Case	ULS/2	ULS/2	ULS/1	ULS/11	ULS/2	ULS/2
50 / MAX	0.48	0.00	0.00	0.00	0.00	0.00
Node	48	48	48	48	48	48
Case	ULS/2	ULS/2	ULS/1	ULS/2	ULS/2	ULS/2
50 / MIN	0.01	0.00	-0.02	-0.00	-0.00	-0.00
Node	22	48	22	48	22	22
Case	ULS/11	ULS/11	ULS/2	ULS/1	ULS/2	ULS/2
51 / MAX	-0.06	0.00	0.01	-0.00	0.00	0.00
Node	23	23	23	23	23	22
Case	ULS/11	ULS/1	ULS/1	ULS/11	ULS/2	ULS/2
51 / MIN	-0.78	-0.02	-0.04	-0.00	-0.01	-0.00
Node	22	23	22	23	22	23
Case	ULS/2	ULS/2	ULS/2	ULS/2	ULS/2	ULS/2
52 / MAX	1.38	0.00	-0.00	-0.00	0.00	0.00
Node	39	22	22	22	22	39
Case	ULS/2	3	ULS/11	ULS/11	ULS/2	ULS/2
52 / MIN	0.02	-0.00	-0.01	-0.00	-0.00	-0.00
Node	22	22	39	22	39	22
Case	ULS/11	ULS/1	ULS/2	ULS/2	ULS/2	ULS/1
53 / MAX	0.29	0.01	0.02	0.00	0.00	0.00
Node	39	39	39	39	50	39
Case	ULS/2	ULS/2	ULS/2	ULS/2	ULS/2	ULS/2
53 / MIN	0.01	0.00	-0.01	0.00	-0.00	-0.00
Node	39	39	50	39	39	50
Case	ULS/11	ULS/11	ULS/1	ULS/11	ULS/2	ULS/2
54 / MAX	-0.01	0.01	0.01	0.00	0.00	0.00
Node	50	50	50	50	23	50
Case	ULS/11	ULS/2	ULS/2	ULS/2	ULS/2	ULS/2
54 / MIN	-1.82	-0.00	0.00	0.00	-0.00	-0.00

Node	23	50	50	50	50	50
Case	ULS/2	ULS/1	ULS/11	ULS/11	ULS/2	ULS/1
55 / MAX	0.01	-0.00	0.01	0.00	0.00	0.00
Node	6	6	6	6	3	3
Case	3	3	ULS/2	ULS/2	ULS/2	ULS/2
55 / MIN	-0.02	-0.00	-0.00	0.00	-0.00	-0.00
Node	6	6	3	6	6	6
Case	ULS/1	ULS/2	ULS/1	ULS/11	ULS/2	ULS/2
56 / MAX	0.00	-0.00	-0.00	0.00	0.00	0.00
Node	3	3	3	3	3	8
Case	3	ULS/11	3	ULS/2	ULS/2	ULS/2
56 / MIN	-0.00	-0.00	-0.00	-0.00	-0.00	-0.00
Node	3	3	8	3	8	3
Case	ULS/3	ULS/2	ULS/2	ULS/1	ULS/2	ULS/2
57 / MAX	0.02	0.00	0.00	0.00	0.00	0.00
Node	8	8	8	8	8	8
Case	ULS/2	ULS/2	ULS/1	ULS/2	ULS/2	ULS/2
57 / MIN	0.00	0.00	-0.01	0.00	-0.00	-0.00
Node	8	8	10	8	10	10
Case	2	ULS/11	ULS/2	ULS/11	ULS/2	ULS/2
58 / MAX	0.04	0.00	0.01	0.00	0.00	0.00
Node	10	10	6	10	6	10
Case	ULS/2	ULS/2	ULS/2	ULS/2	ULS/2	ULS/2
58 / MIN	-0.00	-0.00	0.00	0.00	-0.00	-0.00
Node	6	10	10	10	10	6
Case	ULS/1	ULS/1	3	ULS/11	ULS/2	ULS/2
59 / MAX	-0.30	0.01	-0.01	0.00	0.00	0.00
Node	5057	5070	5057	5057	5057	5070
Case	ULS/11	ULS/2	ULS/11	ULS/2	ULS/2	ULS/1

59 / MIN	-3.13	-0.00	-0.08	-0.00	-0.02	-0.00
Node	5057	5057	5070	5057	5070	5070
Case	ULS/2	ULS/1	ULS/2	ULS/1	ULS/2	ULS/2
60 / MAX	-0.28	0.02	-0.01	0.00	-0.00	0.01
Node	5070	5069	5070	5070	5070	5069
Case	ULS/11	ULS/1	ULS/11	3	ULS/11	ULS/2
60 / MIN	-3.63	-0.04	-0.10	-0.00	-0.05	-0.00
Node	5070	5070	5069	5070	5069	5069
Case	ULS/2	ULS/2	ULS/2	ULS/1	ULS/2	ULS/1
61 / MAX	2.58	-0.01	0.01	0.00	0.04	0.00
Node	5073	5073	5073	5073	5073	5067
Case	ULS/2	ULS/11	ULS/1	ULS/2	ULS/2	ULS/1
61 / MIN	0.55	-0.05	-0.26	-0.00	-0.03	-0.01
Node	5073	5073	5067	5073	5067	5073
Case	2	ULS/2	ULS/2	ULS/1	ULS/2	ULS/2
62 / MAX	1.39	0.00	0.05	0.00	-0.00	0.00
Node	5067	5067	5067	5067	5061	5067
Case	ULS/2	ULS/2	ULS/2	ULS/2	ULS/11	ULS/1
62 / MIN	0.27	0.00	-0.00	-0.00	-0.03	-0.00
Node	5067	5067	5061	5067	5067	5061
Case	2	3	ULS/1	ULS/1	ULS/2	ULS/2
63 / MAX	1.16	-0.00	0.25	-0.00	0.03	0.01
Node	1	1	1	1	20	20
Case	ULS/2	ULS/11	ULS/2	ULS/11	ULS/2	ULS/2
63 / MIN	0.02	-0.10	0.00	-0.00	-0.03	-0.01
Node	1	1	20	1	1	1
Case	ULS/11	ULS/2	ULS/11	ULS/2	ULS/2	ULS/2
64 / MAX	0.01	0.04	0.18	0.00	0.02	0.00
Node	20	20	20	20	40	20

Case	ULS/2	ULS/2	ULS/2	ULS/1	ULS/2	ULS/2
64 / MIN	-0.00	0.00	0.01	-0.00	-0.02	-0.01
Node	20	20	40	20	20	40
Case	ULS/1	ULS/11	ULS/11	ULS/2	ULS/2	ULS/2
65 / MAX	1.99	0.00	-0.00	-0.00	0.02	0.00
Node	40	40	40	40	40	2
Case	ULS/2	ULS/3	ULS/11	ULS/11	ULS/2	ULS/4
65 / MIN	0.03	-0.03	-0.15	-0.00	-0.02	-0.00
Node	2	40	2	40	2	40
Case	ULS/11	ULS/4	ULS/2	ULS/2	ULS/2	ULS/4
66 / MAX	1.84	-0.00	0.28	-0.00	0.03	0.02
Node	44	44	44	44	46	46
Case	ULS/2	ULS/11	ULS/2	ULS/11	ULS/2	ULS/2
66 / MIN	0.03	-0.14	0.00	-0.00	-0.03	-0.02
Node	44	44	46	44	44	44
Case	ULS/11	ULS/2	ULS/11	ULS/2	ULS/2	ULS/2
67 / MAX	-0.04	0.03	0.13	-0.00	0.02	0.00
Node	46	46	46	46	49	46
Case	ULS/11	ULS/2	ULS/2	ULS/11	ULS/2	ULS/2
67 / MIN	-1.67	0.00	0.00	-0.00	-0.01	-0.00
Node	46	46	49	46	46	49
Case	ULS/2	ULS/11	ULS/11	ULS/2	ULS/2	ULS/2
68 / MAX	1.17	-0.00	-0.00	-0.00	0.02	0.01
Node	49	49	49	49	49	51
Case	ULS/2	ULS/11	ULS/11	ULS/11	ULS/2	ULS/2
68 / MIN	0.03	-0.08	-0.19	-0.00	-0.02	-0.01
Node	49	49	51	49	51	49
Case	ULS/11	ULS/2	ULS/2	ULS/2	ULS/2	ULS/2
69 / MAX	-0.02	0.02	-0.00	-0.00	0.01	0.00

Node	51	51	51	51	51	51
Case	ULS/11	ULS/4	ULS/11	ULS/11	ULS/2	ULS/4
69 / MIN	-0.28	-0.01	-0.07	-0.00	-0.01	-0.00
Node	51	51	44	51	44	44
Case	ULS/2	ULS/3	ULS/2	ULS/2	ULS/2	ULS/4
70 / MAX	1.03	0.10	-0.01	-0.00	0.01	0.01
Node	58	58	58	58	58	58
Case	ULS/2	ULS/2	ULS/11	ULS/11	ULS/2	ULS/2
70 / MIN	0.06	0.00	-0.11	-0.00	-0.01	-0.01
Node	58	58	59	58	59	59
Case	ULS/11	ULS/11	ULS/2	ULS/2	ULS/2	ULS/2
71 / MAX	-0.36	1.24	8.61	0.02	0.42	0.06
Node	2280	2281	2281	2281	2280	2281
Case	ULS/11	ULS/2	ULS/2	ULS/2	ULS/2	ULS/2
71 / MIN	-19.92	0.06	0.15	0.00	0.00	-0.00
Node	2281	2281	2280	2281	2281	2280
Case	ULS/2	ULS/11	ULS/11	ULS/11	ULS/11	ULS/1
72 / MAX	2.34	-0.00	0.25	0.00	0.03	0.02
Node	59	59	59	59	62	62
Case	ULS/2	ULS/11	ULS/2	ULS/2	ULS/2	ULS/2
72 / MIN	0.05	-0.15	0.00	0.00	-0.03	-0.02
Node	59	59	62	59	59	59
Case	ULS/11	ULS/2	ULS/11	ULS/11	ULS/2	ULS/2
73 / MAX	2.19	0.10	0.26	-0.00	0.03	0.01
Node	63	62	62	62	63	62
Case	ULS/2	ULS/2	ULS/2	ULS/11	ULS/2	ULS/2
73 / MIN	0.08	0.00	0.01	-0.00	-0.03	-0.01
Node	62	62	63	62	62	63
Case	ULS/11	ULS/11	ULS/11	ULS/2	ULS/2	ULS/2

74 / MAX	2.59	-0.00	-0.01	0.00	0.04	0.03
Node	63	63	63	63	63	58
Case	ULS/2	ULS/11	ULS/11	ULS/2	ULS/2	ULS/2
74 / MIN	0.04	-0.24	-0.31	0.00	-0.04	-0.03
Node	58	63	58	63	58	63
Case	ULS/11	ULS/2	ULS/2	ULS/11	ULS/2	ULS/2
75 / MAX	2.35	-0.00	0.31	0.00	0.04	0.02
Node	64	64	64	64	65	65
Case	ULS/2	ULS/11	ULS/2	ULS/2	ULS/2	ULS/2
75 / MIN	0.04	-0.13	0.01	0.00	-0.04	-0.02
Node	64	64	65	64	64	64
Case	ULS/11	ULS/2	ULS/11	ULS/11	ULS/2	ULS/2
76 / MAX	0.58	0.07	-0.01	-0.00	0.02	0.01
Node	65	65	65	65	65	65
Case	ULS/2	ULS/2	ULS/11	ULS/11	ULS/2	ULS/2
76 / MIN	0.03	0.00	-0.21	-0.00	-0.02	-0.01
Node	65	65	66	65	66	66
Case	ULS/11	ULS/11	ULS/2	ULS/2	ULS/2	ULS/2
77 / MAX	2.14	-0.00	-0.00	0.00	0.03	0.01
Node	66	66	66	66	66	67
Case	ULS/2	ULS/11	ULS/11	ULS/2	ULS/2	ULS/2
77 / MIN	0.04	-0.08	-0.25	0.00	-0.03	-0.01
Node	66	66	67	66	67	66
Case	ULS/11	ULS/2	ULS/2	ULS/11	ULS/2	ULS/2
78 / MAX	0.58	0.07	0.11	-0.00	0.01	0.01
Node	67	67	67	67	64	67
Case	ULS/2	ULS/2	ULS/2	ULS/11	ULS/2	ULS/2
78 / MIN	0.02	0.00	0.01	-0.00	-0.01	-0.01
Node	67	67	64	67	67	64

Case	ULS/11	ULS/11	ULS/11	ULS/2	ULS/2	ULS/2
79 / MAX	0.72	0.03	-0.01	0.00	0.02	0.00
Node	68	68	68	68	68	68
Case	ULS/2	ULS/2	ULS/11	ULS/3	ULS/2	ULS/2
79 / MIN	0.03	0.00	-0.13	-0.00	-0.02	-0.00
Node	68	68	69	68	69	69
Case	ULS/11	ULS/11	ULS/2	3	ULS/2	ULS/2
80 / MAX	2.18	-0.00	0.28	-0.00	0.03	0.01
Node	69	69	69	69	70	70
Case	ULS/2	ULS/11	ULS/2	ULS/11	ULS/2	ULS/2
80 / MIN	0.05	-0.05	0.01	-0.00	-0.03	-0.01
Node	69	69	70	69	69	69
Case	ULS/11	ULS/2	ULS/11	ULS/2	ULS/2	ULS/2
81 / MAX	0.91	0.03	0.13	0.00	0.02	0.00
Node	70	70	70	70	71	70
Case	ULS/2	ULS/2	ULS/2	ULS/2	ULS/2	ULS/2
81 / MIN	0.04	0.00	0.01	0.00	-0.02	-0.00
Node	70	70	71	70	70	71
Case	ULS/11	ULS/11	ULS/11	ULS/11	ULS/2	ULS/2
82 / MAX	1.97	-0.00	-0.00	0.00	0.03	0.01
Node	71	71	71	71	71	68
Case	ULS/2	ULS/11	ULS/11	ULS/2	ULS/2	ULS/2
82 / MIN	0.03	-0.05	-0.28	0.00	-0.03	-0.01
Node	71	71	68	71	68	71
Case	ULS/11	ULS/2	ULS/2	ULS/11	ULS/2	ULS/2
83 / MAX	-0.05	0.04	-0.00	0.00	0.01	0.01
Node	72	72	72	72	72	72
Case	ULS/11	ULS/2	ULS/11	ULS/2	ULS/2	ULS/2
83 / MIN	-1.28	0.00	-0.11	0.00	-0.01	-0.00

Node	72	72	73	72	73	73
Case	ULS/2	ULS/11	ULS/2	ULS/11	ULS/2	ULS/2
84 / MAX	-0.05	-0.00	0.28	0.00	0.04	0.00
Node	73	73	73	73	74	74
Case	ULS/11	ULS/11	ULS/2	ULS/2	ULS/2	ULS/2
84 / MIN	-2.33	-0.04	0.01	0.00	-0.03	-0.00
Node	73	73	74	73	73	73
Case	ULS/2	ULS/2	ULS/11	ULS/11	ULS/2	ULS/2
85 / MAX	-0.04	0.03	0.14	0.00	0.02	0.00
Node	74	74	74	74	75	74
Case	ULS/11	ULS/2	ULS/2	ULS/2	ULS/2	ULS/2
85 / MIN	-0.69	0.00	0.01	0.00	-0.02	-0.00
Node	74	74	75	74	74	75
Case	ULS/2	ULS/11	ULS/11	ULS/11	ULS/2	ULS/2
86 / MAX	-0.04	-0.00	-0.00	0.00	0.03	0.00
Node	75	75	75	75	75	72
Case	ULS/11	ULS/11	ULS/11	ULS/2	ULS/2	ULS/2
86 / MIN	-2.13	-0.03	-0.27	0.00	-0.03	-0.00
Node	75	75	72	75	72	75
Case	ULS/2	ULS/2	ULS/2	ULS/11	ULS/2	ULS/2
87 / MAX	0.0	0.01	0.06	0.00	0.01	0.00
Node	7	7	7	7	9	7
Case	1	ULS/2	ULS/2	ULS/2	ULS/2	ULS/2
87 / MIN	0.0	0.00	-0.01	0.00	-0.01	-0.00
Node	7	7	9	7	7	9
Case	1	ULS/11	ULS/1	ULS/11	ULS/2	ULS/2
88 / MAX	0.0	-0.00	0.01	-0.00	0.01	0.00
Node	9	9	9	9	9	55
Case	1	ULS/11	ULS/1	ULS/11	ULS/2	ULS/2

88 / MIN	0.0	-0.01	-0.06	-0.00	-0.01	-0.00
Node	9	9	55	9	55	9
Case	1	ULS/2	ULS/2	ULS/2	ULS/2	ULS/2
89 / MAX	0.0	-0.00	0.01	-0.00	0.00	0.00
Node	55	55	55	55	55	54
Case	1	ULS/11	ULS/1	ULS/11	ULS/2	ULS/2
89 / MIN	0.0	-0.01	-0.04	-0.00	-0.01	-0.00
Node	55	55	54	55	54	55
Case	1	ULS/2	ULS/2	ULS/2	ULS/2	ULS/2
90 / MAX	0.0	0.00	0.02	0.00	0.00	-0.00
Node	54	54	54	54	54	54
Case	1	ULS/2	ULS/2	ULS/2	ULS/1	ULS/11
90 / MIN	0.0	0.00	-0.01	0.00	-0.00	-0.00
Node	54	54	7	54	54	7
Case	1	ULS/11	ULS/1	ULS/11	ULS/2	ULS/2
91 / MAX	-0.16	0.00	0.02	0.00	0.00	0.00
Node	54	54	54	54	77	77
Case	3	ULS/1	ULS/2	ULS/2	ULS/2	ULS/2
91 / MIN	-1.24	-0.00	-0.00	0.00	-0.00	-0.00
Node	77	54	77	54	54	77
Case	ULS/2	ULS/2	ULS/1	2	ULS/2	ULS/1
92 / MAX	-0.11	0.01	0.04	-0.00	0.00	0.00
Node	77	77	77	77	78	77
Case	ULS/11	ULS/2	ULS/2	ULS/11	ULS/2	ULS/2
92 / MIN	-6.16	0.00	0.00	-0.00	-0.01	-0.00
Node	78	77	78	77	77	78
Case	ULS/2	ULS/11	ULS/11	ULS/2	ULS/2	ULS/2
93 / MAX	7.14	0.00	0.05	0.00	0.01	-0.00
Node	78	78	78	78	74	78

Case	ULS/2	ULS/2	ULS/2	ULS/2	ULS/2	ULS/11
93 / MIN	0.12	0.00	0.00	0.00	-0.00	-0.00
Node	74	78	74	78	78	74
Case	ULS/11	ULS/11	ULS/11	ULS/11	ULS/2	ULS/2
94 / MAX	-0.14	-0.00	-0.00	0.00	0.01	0.00
Node	70	70	70	70	70	79
Case	ULS/11	ULS/11	ULS/11	ULS/2	ULS/2	ULS/2
94 / MIN	-7.17	-0.01	-0.04	0.00	-0.01	-0.00
Node	79	70	79	70	79	70
Case	ULS/2	ULS/2	ULS/2	ULS/11	ULS/2	ULS/2
95 / MAX	6.47	0.00	0.01	-0.00	0.00	0.00
Node	79	79	79	79	80	79
Case	ULS/2	ULS/2	ULS/2	ULS/11	ULS/2	ULS/2
95 / MIN	0.13	0.00	-0.00	-0.00	-0.00	-0.00
Node	80	79	80	79	79	80
Case	ULS/11	ULS/11	ULS/1	ULS/2	ULS/2	ULS/2
96 / MAX	-0.14	-0.00	-0.00	-0.00	0.00	0.00
Node	80	80	80	80	80	67
Case	ULS/11	ULS/11	ULS/11	ULS/11	ULS/2	ULS/2
96 / MIN	-7.04	-0.01	-0.03	-0.00	-0.01	-0.00
Node	67	80	67	80	67	80
Case	ULS/2	ULS/2	ULS/2	ULS/2	ULS/2	ULS/2
97 / MAX	-0.14	-0.00	-0.00	0.00	0.01	0.01
Node	62	62	62	62	62	81
Case	ULS/11	ULS/11	ULS/11	ULS/2	ULS/2	ULS/2
97 / MIN	-6.77	-0.06	-0.04	0.00	-0.00	-0.01
Node	81	62	81	62	81	62
Case	ULS/2	ULS/2	ULS/2	ULS/11	ULS/2	ULS/2
98 / MAX	5.21	-0.00	0.01	-0.00	0.00	0.01

Node	81	81	81	81	82	82
Case	ULS/2	ULS/11	ULS/2	ULS/11	ULS/2	ULS/2
98 / MIN	0.10	-0.08	-0.00	-0.00	-0.00	-0.01
Node	82	81	82	81	81	81
Case	ULS/11	ULS/2	ULS/1	ULS/2	ULS/2	ULS/2
99 / MAX	-0.09	-0.00	-0.00	0.00	0.00	0.01
Node	82	82	82	82	82	83
Case	ULS/11	ULS/11	ULS/11	ULS/2	ULS/2	ULS/2
99 / MIN	-4.70	-0.06	-0.01	0.00	-0.00	-0.01
Node	83	82	83	82	83	82
Case	ULS/2	ULS/2	ULS/2	ULS/11	ULS/2	ULS/2
100 / MAX	5.00	-0.00	0.01	-0.00	0.00	0.01
Node	83	83	83	83	84	84
Case	ULS/2	ULS/11	ULS/2	ULS/11	ULS/2	ULS/2
100 / MIN	0.10	-0.06	-0.00	-0.00	-0.00	-0.01
Node	84	83	84	83	83	83
Case	ULS/11	ULS/2	ULS/1	ULS/2	ULS/2	ULS/2
101 / MAX	-0.12	-0.00	-0.00	0.00	0.01	0.01
Node	84	84	84	84	84	51
Case	ULS/11	ULS/11	ULS/11	ULS/2	ULS/2	ULS/2
101 / MIN	-5.96	-0.03	-0.03	0.00	-0.01	-0.01
Node	51	84	51	84	51	84
Case	ULS/2	ULS/2	ULS/2	ULS/11	ULS/2	ULS/2
102 / MAX	4.60	0.01	-0.00	-0.00	0.01	0.00
Node	85	49	49	49	49	49
Case	ULS/2	ULS/2	ULS/11	ULS/11	ULS/2	ULS/2
102 / MIN	0.12	0.00	-0.04	-0.00	-0.00	-0.00
Node	49	49	85	49	85	85
Case	ULS/11	ULS/11	ULS/2	ULS/2	ULS/2	ULS/2

103 / MAX	-0.12	0.02	-0.00	0.00	0.01	0.00
Node	86	85	85	85	85	85
Case	ULS/11	ULS/2	ULS/11	ULS/2	ULS/2	ULS/2
103 / MIN	-4.13	0.00	-0.05	0.00	-0.01	-0.00
Node	85	85	86	85	86	86
Case	ULS/2	ULS/11	ULS/2	ULS/11	ULS/2	ULS/2
104 / MAX	4.10	0.02	-0.00	-0.00	0.01	0.00
Node	87	86	86	86	86	86
Case	ULS/2	ULS/2	ULS/11	ULS/11	ULS/2	ULS/2
104 / MIN	0.12	0.00	-0.08	-0.00	-0.02	-0.00
Node	86	86	87	86	87	87
Case	ULS/11	ULS/11	ULS/2	ULS/2	ULS/2	ULS/2
105 / MAX	-0.07	0.04	-0.00	-0.00	0.01	0.01
Node	58	58	58	58	58	58
Case	ULS/11	ULS/2	ULS/11	ULS/11	ULS/2	ULS/2
105 / MIN	-1.53	0.00	-0.02	-0.00	-0.00	-0.01
Node	81	58	81	58	81	81
Case	ULS/2	ULS/11	ULS/2	ULS/2	ULS/2	ULS/2
106 / MAX	0.85	0.04	-0.00	0.00	0.00	0.01
Node	81	81	81	81	81	81
Case	ULS/2	ULS/2	ULS/11	ULS/2	ULS/2	ULS/2
106 / MIN	0.05	0.00	-0.02	0.00	-0.00	-0.01
Node	89	81	89	81	89	89
Case	ULS/11	ULS/11	ULS/2	ULS/11	ULS/2	ULS/2
107 / MAX	0.64	0.03	0.00	-0.00	0.00	0.00
Node	89	89	89	89	89	89
Case	ULS/2	ULS/2	ULS/1	ULS/11	ULS/2	ULS/2
107 / MIN	0.07	0.00	-0.00	-0.00	-0.00	-0.01
Node	83	89	83	89	83	83

Case	ULS/11	ULS/11	ULS/2	ULS/2	ULS/2	ULS/2
108 / MAX	-0.07	0.01	0.00	0.00	0.00	0.00
Node	83	83	83	83	83	83
Case	ULS/11	ULS/2	ULS/1	ULS/2	ULS/2	ULS/2
108 / MIN	-0.94	0.00	-0.02	0.00	-0.00	-0.00
Node	91	83	91	83	91	91
Case	ULS/2	ULS/11	ULS/2	ULS/11	ULS/2	ULS/2
109 / MAX	0.61	0.00	0.00	-0.00	0.00	0.00
Node	91	91	91	91	91	51
Case	ULS/2	ULS/4	ULS/1	ULS/11	ULS/2	ULS/3
109 / MIN	0.06	-0.00	-0.00	-0.00	-0.00	-0.00
Node	51	91	51	91	51	91
Case	ULS/11	ULS/3	ULS/2	ULS/2	ULS/3	ULS/2
110 / MAX	3.65	-0.00	0.03	-0.00	0.01	0.00
Node	54	54	54	54	92	92
Case	ULS/2	ULS/11	ULS/2	ULS/11	ULS/2	ULS/2
110 / MIN	-0.21	-0.00	0.00	-0.00	-0.01	-0.00
Node	92	54	92	54	54	54
Case	ULS/1	ULS/2	ULS/11	ULS/2	ULS/2	ULS/4
111 / MAX	-0.11	0.01	0.04	0.00	0.01	0.00
Node	92	92	92	92	78	92
Case	ULS/11	ULS/2	ULS/2	ULS/2	ULS/2	ULS/2
111 / MIN	-2.56	0.00	0.00	0.00	-0.01	-0.00
Node	78	92	78	92	92	78
Case	ULS/2	ULS/11	ULS/11	ULS/11	ULS/2	ULS/2
112 / MAX	3.59	0.01	0.03	-0.00	0.01	0.00
Node	78	78	78	78	72	78
Case	ULS/2	ULS/2	ULS/2	ULS/11	ULS/2	ULS/2
112 / MIN	0.14	0.00	0.00	-0.00	-0.00	-0.00

Node	72	78	72	78	78	72
Case	ULS/11	ULS/11	ULS/11	ULS/2	ULS/2	ULS/1
113 / MAX	-0.12	0.01	-0.00	-0.00	0.00	0.00
Node	68	68	68	68	68	68
Case	ULS/11	ULS/2	ULS/11	ULS/11	ULS/2	ULS/2
113 / MIN	-2.61	0.00	-0.01	-0.00	-0.00	-0.00
Node	79	68	79	68	79	79
Case	ULS/2	ULS/11	ULS/2	ULS/2	ULS/2	ULS/2
114 / MAX	2.73	0.01	0.02	-0.00	0.00	0.00
Node	79	79	79	79	95	79
Case	ULS/2	ULS/2	ULS/2	ULS/11	ULS/2	ULS/2
114 / MIN	0.12	0.00	0.00	-0.00	-0.00	-0.00
Node	95	79	95	79	79	95
Case	ULS/11	ULS/11	ULS/11	ULS/2	ULS/2	ULS/2
115 / MAX	-0.13	0.02	-0.00	0.00	0.00	0.00
Node	95	95	95	95	95	95
Case	ULS/11	ULS/2	ULS/11	ULS/2	ULS/2	ULS/2
115 / MIN	-2.81	0.00	-0.01	0.00	-0.00	-0.00
Node	67	95	67	95	67	67
Case	ULS/2	ULS/11	ULS/2	ULS/11	ULS/2	ULS/2
116 / MAX	1.26	0.00	0.02	0.00	0.00	0.00
Node	7	7	7	7	96	96
Case	ULS/2	ULS/1	ULS/2	ULS/2	ULS/2	ULS/2
116 / MIN	-0.58	-0.01	0.00	0.00	-0.00	-0.00
Node	96	7	96	7	7	7
Case	ULS/1	ULS/2	ULS/11	ULS/11	ULS/2	ULS/2
117 / MAX	-0.08	0.00	0.00	-0.00	-0.00	0.00
Node	96	96	96	96	97	97
Case	ULS/11	ULS/1	ULS/1	ULS/11	ULS/11	ULS/2

117 / MIN	-5.87	-0.02	-0.00	-0.00	-0.00	-0.00
Node	97	96	97	96	97	96
Case	ULS/2	ULS/2	ULS/2	ULS/2	ULS/2	ULS/2
118 / MAX	7.35	0.00	0.05	0.00	0.01	0.00
Node	97	97	97	97	75	75
Case	ULS/2	ULS/1	ULS/2	ULS/2	ULS/2	2
118 / MIN	0.12	-0.00	0.00	0.00	-0.01	-0.00
Node	75	97	75	97	97	97
Case	ULS/11	ULS/2	ULS/11	ULS/11	ULS/2	ULS/2
119 / MAX	-0.13	-0.00	-0.00	0.00	0.01	0.00
Node	71	71	71	71	71	98
Case	ULS/11	ULS/11	ULS/11	ULS/2	ULS/2	ULS/2
119 / MIN	-7.27	-0.02	-0.04	0.00	-0.00	-0.00
Node	98	71	98	71	98	71
Case	ULS/2	ULS/2	ULS/2	ULS/11	ULS/2	ULS/2
120 / MAX	6.84	-0.00	0.02	0.00	0.00	0.00
Node	98	98	98	98	99	99
Case	ULS/2	ULS/11	ULS/2	ULS/2	ULS/2	ULS/2
120 / MIN	0.12	-0.02	0.00	-0.00	-0.00	-0.00
Node	99	98	99	98	98	98
Case	ULS/11	ULS/2	ULS/11	ULS/1	ULS/2	ULS/2
121 / MAX	-0.13	-0.00	-0.00	-0.00	0.00	0.00
Node	99	99	99	99	99	64
Case	ULS/11	ULS/11	ULS/11	2	ULS/2	ULS/2
121 / MIN	-7.46	-0.02	-0.03	-0.00	-0.01	-0.00
Node	64	99	64	99	64	99
Case	ULS/2	ULS/2	ULS/2	ULS/2	ULS/2	ULS/2
122 / MAX	-0.14	-0.00	-0.00	0.00	0.01	0.02
Node	63	63	63	63	63	100

Case	ULS/11	ULS/11	ULS/11	ULS/2	ULS/2	ULS/2
122 / MIN	-8.27	-0.09	-0.04	0.00	-0.00	-0.02
Node	100	63	100	63	100	63
Case	ULS/2	ULS/2	ULS/2	ULS/11	ULS/2	ULS/2
123 / MAX	6.93	-0.00	0.04	-0.00	0.00	0.03
Node	100	100	100	100	87	87
Case	ULS/2	ULS/11	ULS/2	ULS/11	ULS/2	ULS/2
123 / MIN	0.12	-0.15	0.00	-0.00	-0.01	-0.02
Node	87	100	87	100	100	100
Case	ULS/11	ULS/2	ULS/11	ULS/2	ULS/2	ULS/2
124 / MAX	-0.11	-0.00	0.01	-0.00	0.00	0.01
Node	87	87	87	87	101	101
Case	ULS/11	ULS/11	ULS/2	ULS/11	ULS/2	ULS/2
124 / MIN	-6.25	-0.06	0.00	-0.00	-0.00	-0.01
Node	101	87	101	87	87	87
Case	ULS/2	ULS/2	ULS/11	ULS/2	ULS/4	ULS/2
125 / MAX	6.72	-0.00	0.03	-0.00	0.00	0.01
Node	101	101	101	101	85	85
Case	ULS/2	ULS/11	ULS/2	ULS/11	ULS/2	ULS/2
125 / MIN	0.11	-0.03	0.00	-0.00	-0.01	-0.01
Node	85	101	85	101	101	101
Case	ULS/11	ULS/2	ULS/11	ULS/2	ULS/2	ULS/2
126 / MAX	-0.14	-0.00	-0.00	0.00	0.01	0.01
Node	85	85	85	85	85	44
Case	ULS/11	ULS/11	ULS/11	ULS/2	ULS/2	ULS/2
126 / MIN	-8.12	-0.04	-0.04	0.00	-0.01	-0.01
Node	44	85	44	85	44	85
Case	ULS/2	ULS/2	ULS/2	ULS/11	ULS/2	ULS/2
127 / MAX	-0.13	-0.00	0.00	-0.00	0.00	0.00

Node	55	55	55	55	96	96
Case	3	ULS/11	ULS/4	ULS/11	ULS/2	ULS/2
127 / MIN	-0.79	-0.01	-0.00	-0.00	-0.00	0.00
Node	96	55	55	55	55	55
Case	ULS/2	ULS/2	2	ULS/2	ULS/4	ULS/11
128 / MAX	-0.12	0.03	0.00	0.00	0.00	0.00
Node	96	96	96	96	96	96
Case	ULS/11	ULS/2	ULS/1	ULS/2	ULS/2	ULS/2
128 / MIN	-3.09	0.00	-0.02	0.00	-0.00	-0.01
Node	102	96	102	96	102	102
Case	ULS/2	ULS/11	ULS/2	ULS/11	ULS/2	ULS/2
129 / MAX	3.00	0.01	0.01	-0.00	0.00	0.00
Node	102	102	102	102	75	102
Case	ULS/2	ULS/2	ULS/2	ULS/11	ULS/2	ULS/2
129 / MIN	0.14	0.00	0.00	-0.00	-0.00	-0.00
Node	75	102	75	102	102	75
Case	ULS/11	ULS/11	ULS/11	ULS/2	ULS/2	ULS/1
130 / MAX	-0.15	0.01	-0.00	-0.00	0.00	0.00
Node	71	71	71	71	71	71
Case	ULS/11	ULS/2	ULS/11	ULS/11	ULS/2	ULS/2
130 / MIN	-3.53	0.00	-0.02	-0.00	-0.00	-0.00
Node	103	71	103	71	103	103
Case	ULS/2	ULS/11	ULS/2	ULS/2	ULS/2	ULS/2
131 / MAX	3.36	0.00	0.01	0.00	0.00	0.00
Node	103	103	103	103	99	103
Case	ULS/2	ULS/2	ULS/2	2	ULS/2	ULS/2
131 / MIN	0.14	-0.00	-0.00	-0.00	-0.00	-0.00
Node	99	103	99	103	103	103
Case	ULS/11	ULS/1	ULS/1	ULS/4	ULS/2	ULS/1

132 / MAX	-0.16	0.02	-0.00	0.00	0.00	0.00
Node	99	99	99	99	99	99
Case	ULS/11	ULS/2	ULS/11	ULS/2	ULS/2	ULS/2
132 / MIN	-3.94	0.00	-0.02	0.00	-0.01	-0.00
Node	66	99	66	99	66	66
Case	ULS/2	ULS/11	ULS/2	ULS/11	ULS/2	ULS/2
133 / MAX	-0.10	0.03	-0.00	-0.00	0.01	0.01
Node	63	63	63	63	63	63
Case	ULS/11	ULS/2	ULS/11	ULS/11	ULS/2	ULS/2
133 / MIN	-2.30	0.00	-0.04	-0.00	-0.00	-0.00
Node	105	63	105	63	105	105
Case	ULS/2	ULS/11	ULS/2	ULS/2	ULS/2	ULS/2
134 / MAX	1.97	0.03	-0.00	0.00	0.01	0.01
Node	105	105	105	105	105	105
Case	ULS/2	ULS/2	ULS/11	ULS/2	ULS/2	ULS/2
134 / MIN	0.07	0.00	-0.06	0.00	-0.02	-0.00
Node	87	105	87	105	87	87
Case	ULS/11	ULS/11	ULS/2	ULS/11	ULS/2	ULS/2
135 / MAX	0.93	0.01	0.02	0.00	0.04	0.00
Node	5072	5072	5072	5072	5072	5072
Case	ULS/1	ULS/2	ULS/1	ULS/2	ULS/2	ULS/2
135 / MIN	-0.42	0.00	-0.20	-0.00	-0.02	-0.00
Node	5072	5072	5064	5072	5064	5064
Case	3	ULS/11	ULS/2	ULS/1	ULS/2	ULS/2
136 / MAX	0.63	0.02	0.03	-0.00	0.00	0.00
Node	5064	5064	5064	5064	5064	5064
Case	ULS/1	ULS/2	ULS/2	3	ULS/1	ULS/2
136 / MIN	-0.38	0.00	-0.00	-0.00	-0.01	-0.00
Node	5064	5064	5060	5064	5064	5060

Case	ULS/2	ULS/11	ULS/1	ULS/2	ULS/2	ULS/2
137 / MAX	1.39	0.00	0.05	0.00	0.00	0.00
Node	5061	5061	5061	5061	5055	5061
Case	ULS/2	ULS/2	ULS/2	ULS/2	ULS/2	ULS/1
137 / MIN	0.27	0.00	-0.00	-0.00	-0.01	-0.00
Node	5061	5061	5055	5061	5061	5055
Case	2	3	ULS/1	ULS/1	ULS/2	ULS/2
138 / MAX	0.45	-0.00	0.01	0.00	0.00	-0.00
Node	5055	5055	5055	5055	5055	5049
Case	ULS/2	ULS/11	ULS/1	ULS/2	3	ULS/11
138 / MIN	0.07	-0.00	-0.01	-0.00	-0.00	-0.00
Node	5055	5055	5049	5055	5055	5055
Case	2	ULS/2	ULS/2	ULS/1	ULS/1	ULS/2
139 / MAX	9.15	0.12	0.07	0.03	0.02	0.14
Node	114	113	113	113	114	113
Case	ULS/2	ULS/2	ULS/2	ULS/2	ULS/2	ULS/2
139 / MIN	0.27	0.00	-0.01	0.00	-0.07	-0.06
Node	113	113	114	113	113	114
Case	ULS/11	ULS/11	ULS/1	ULS/11	ULS/2	ULS/2
140 / MAX	1.34	0.12	0.03	0.04	0.00	0.14
Node	116	115	115	115	116	115
Case	ULS/2	ULS/2	ULS/2	ULS/2	2	ULS/2
140 / MIN	0.14	0.00	-0.01	0.00	-0.04	-0.05
Node	115	115	116	115	115	116
Case	ULS/11	ULS/11	ULS/1	ULS/11	ULS/2	ULS/2
141 / MAX	3.78	-0.00	0.46	-0.00	0.05	0.02
Node	117	117	117	117	118	118
Case	ULS/2	ULS/11	ULS/2	ULS/11	ULS/2	ULS/2
141 / MIN	0.06	-0.14	0.01	-0.00	-0.06	-0.01

Node	117	117	118	117	117	117
Case	ULS/11	ULS/2	ULS/11	ULS/2	ULS/2	ULS/2
142 / MAX	0.93	0.00	0.20	-0.00	0.04	0.00
Node	119	117	117	117	119	119
Case	ULS/2	ULS/3	ULS/2	ULS/11	ULS/2	ULS/4
142 / MIN	0.01	-0.01	0.00	-0.00	-0.01	-0.00
Node	117	117	117	117	117	117
Case	ULS/11	ULS/4	ULS/11	ULS/2	ULS/2	ULS/2
143 / MAX	1.74	-0.00	0.16	-0.00	0.02	0.02
Node	119	119	119	119	120	120
Case	ULS/2	ULS/11	ULS/2	ULS/11	ULS/2	ULS/2
143 / MIN	0.02	-0.11	0.00	-0.00	-0.01	-0.01
Node	119	119	120	119	119	119
Case	ULS/11	ULS/2	ULS/11	ULS/2	ULS/2	ULS/2
144 / MAX	-0.02	0.18	0.29	0.00	0.03	0.02
Node	120	120	120	120	118	120
Case	ULS/11	ULS/2	ULS/2	ULS/2	ULS/2	ULS/2
144 / MIN	-1.04	0.00	0.00	0.00	-0.03	-0.02
Node	118	120	120	120	120	118
Case	ULS/2	ULS/11	ULS/11	ULS/11	ULS/2	ULS/2
145 / MAX	-0.02	-0.00	0.35	-0.00	0.04	0.01
Node	121	121	121	121	122	122
Case	ULS/11	ULS/11	ULS/2	ULS/11	ULS/2	ULS/2
145 / MIN	-1.09	-0.06	0.01	-0.00	-0.05	-0.01
Node	121	121	122	121	121	121
Case	ULS/2	ULS/2	ULS/11	ULS/2	ULS/2	ULS/2
146 / MAX	-0.02	-0.00	0.26	-0.00	0.03	0.02
Node	123	122	122	122	123	123
Case	ULS/11	ULS/11	ULS/2	ULS/11	ULS/2	ULS/2

146 / MIN	-0.97	-0.13	0.00	-0.00	-0.03	-0.02
Node	122	122	122	122	122	122
Case	ULS/2	ULS/2	ULS/11	ULS/2	ULS/2	ULS/2
147 / MAX	0.24	-0.00	-0.00	-0.00	0.01	0.01
Node	123	123	123	123	123	124
Case	ULS/2	ULS/11	ULS/11	ULS/11	ULS/2	ULS/2
147 / MIN	0.01	-0.10	-0.08	-0.00	-0.01	-0.01
Node	123	123	124	123	124	123
Case	ULS/11	ULS/2	ULS/2	ULS/2	ULS/2	ULS/2
148 / MAX	-0.02	0.01	0.23	-0.00	0.02	0.00
Node	124	124	124	124	121	124
Case	ULS/11	ULS/4	ULS/2	ULS/11	ULS/2	ULS/4
148 / MIN	-0.93	-0.00	0.00	-0.00	-0.04	-0.00
Node	121	124	124	124	124	121
Case	ULS/2	ULS/3	ULS/11	ULS/2	ULS/2	ULS/2
149 / MAX	-0.01	0.05	0.17	-0.00	0.02	0.01
Node	125	125	125	125	126	125
Case	ULS/11	ULS/2	ULS/2	ULS/11	ULS/2	ULS/2
149 / MIN	-0.63	0.00	0.00	-0.01	-0.02	-0.01
Node	125	125	126	125	125	126
Case	ULS/2	ULS/11	ULS/11	ULS/2	ULS/2	ULS/2
150 / MAX	0.43	0.06	-0.00	-0.00	0.03	0.01
Node	127	126	126	126	126	126
Case	ULS/2	ULS/2	ULS/11	ULS/11	ULS/2	ULS/2
150 / MIN	0.02	0.00	-0.18	-0.00	-0.01	-0.01
Node	126	126	126	126	127	127
Case	ULS/11	ULS/11	ULS/2	ULS/2	ULS/2	ULS/2
151 / MAX	1.95	-0.00	0.06	-0.00	0.01	0.02
Node	127	127	127	127	128	128

Case	ULS/2	ULS/11	ULS/2	ULS/11	ULS/2	ULS/2
151 / MIN	0.04	-0.21	0.00	-0.01	-0.01	-0.03
Node	127	127	128	127	127	127
Case	ULS/11	ULS/2	ULS/11	ULS/2	ULS/2	ULS/2
152 / MAX	3.68	-0.01	-0.00	-0.00	0.00	0.06
Node	128	128	128	128	128	125
Case	ULS/2	ULS/11	ULS/11	ULS/11	ULS/4	ULS/2
152 / MIN	0.08	-0.55	-0.04	-0.00	-0.01	-0.07
Node	125	128	128	128	125	128
Case	ULS/11	ULS/2	ULS/2	ULS/2	ULS/2	ULS/2
153 / MAX	-0.01	0.07	-0.00	-0.00	0.01	0.01
Node	129	129	129	129	129	129
Case	ULS/11	ULS/2	ULS/11	ULS/11	ULS/2	ULS/2
153 / MIN	-0.25	0.00	-0.05	-0.01	-0.00	-0.01
Node	129	129	130	129	130	130
Case	ULS/2	ULS/11	ULS/2	ULS/2	ULS/3	ULS/2
154 / MAX	0.33	0.07	-0.00	-0.00	0.03	0.01
Node	131	130	130	130	130	130
Case	ULS/2	ULS/2	ULS/11	ULS/11	ULS/2	ULS/2
154 / MIN	0.02	0.00	-0.15	-0.00	-0.01	-0.01
Node	130	130	130	130	131	131
Case	ULS/11	ULS/11	ULS/2	ULS/2	ULS/2	ULS/2
155 / MAX	-0.01	-0.00	0.40	-0.00	0.05	0.03
Node	131	131	131	131	132	132
Case	ULS/11	ULS/11	ULS/2	ULS/11	ULS/2	ULS/2
155 / MIN	-1.04	-0.25	0.01	-0.01	-0.05	-0.03
Node	131	131	132	131	131	131
Case	ULS/2	ULS/2	ULS/11	ULS/2	ULS/2	ULS/2
156 / MAX	0.62	-0.02	0.03	-0.00	0.00	0.10

Node	132	132	132	132	129	129
Case	ULS/2	ULS/11	ULS/2	ULS/11	2	ULS/2
156 / MIN	0.01	-0.81	-0.00	-0.00	-0.01	-0.10
Node	129	132	132	132	132	132
Case	ULS/11	ULS/2	ULS/1	ULS/2	ULS/2	ULS/2
157 / MAX	-0.06	-0.00	0.01	0.00	0.00	0.00
Node	124	124	124	124	133	133
Case	ULS/11	ULS/11	ULS/2	ULS/2	ULS/2	ULS/2
157 / MIN	-3.04	-0.01	-0.00	0.00	-0.00	-0.00
Node	124	124	133	124	124	124
Case	ULS/2	ULS/2	ULS/1	ULS/11	ULS/3	ULS/2
158 / MAX	3.05	-0.00	-0.00	-0.00	0.01	0.00
Node	133	133	133	133	133	134
Case	ULS/2	ULS/11	ULS/11	ULS/11	ULS/2	ULS/2
158 / MIN	0.06	-0.01	-0.06	-0.00	-0.01	-0.00
Node	133	133	134	133	134	133
Case	ULS/11	ULS/2	ULS/2	ULS/2	ULS/2	ULS/2
159 / MAX	-0.06	-0.00	0.07	0.00	0.01	0.00
Node	134	134	134	134	135	135
Case	ULS/11	ULS/11	ULS/2	ULS/2	ULS/2	ULS/2
159 / MIN	-3.41	-0.01	0.00	0.00	-0.01	-0.00
Node	134	134	135	134	134	134
Case	ULS/2	ULS/2	ULS/11	ULS/11	ULS/2	ULS/2
160 / MAX	3.83	-0.00	0.00	0.00	-0.00	0.00
Node	135	135	135	135	135	136
Case	ULS/2	ULS/11	ULS/2	ULS/2	ULS/11	ULS/2
160 / MIN	0.07	-0.02	-0.00	0.00	-0.00	-0.00
Node	135	135	136	135	135	135
Case	ULS/11	ULS/2	ULS/1	ULS/11	ULS/2	ULS/2

161 / MAX	-0.08	-0.00	0.01	0.00	0.01	0.00
Node	136	136	136	136	137	137
Case	ULS/11	ULS/11	ULS/2	ULS/2	ULS/2	ULS/2
161 / MIN	-4.05	-0.01	-0.00	0.00	0.00	-0.00
Node	136	136	137	136	136	136
Case	ULS/2	ULS/2	ULS/1	ULS/11	ULS/11	ULS/2
162 / MAX	4.11	-0.00	0.00	-0.00	0.00	0.00
Node	137	137	137	137	137	138
Case	ULS/2	ULS/11	ULS/1	ULS/11	ULS/2	ULS/2
162 / MIN	0.08	-0.02	-0.02	-0.00	-0.01	-0.00
Node	137	137	138	137	138	137
Case	ULS/11	ULS/2	ULS/2	ULS/2	ULS/2	ULS/2
163 / MAX	-0.08	-0.00	0.02	-0.00	0.01	0.00
Node	138	138	138	138	139	139
Case	ULS/11	ULS/11	ULS/2	ULS/11	ULS/2	ULS/2
163 / MIN	-4.17	-0.02	-0.00	-0.00	0.00	-0.00
Node	138	138	139	138	138	138
Case	ULS/2	ULS/2	ULS/1	ULS/2	ULS/11	ULS/2
164 / MAX	4.57	0.01	-0.00	0.00	0.00	0.00
Node	139	139	139	139	139	139
Case	ULS/2	ULS/2	ULS/11	ULS/2	ULS/2	ULS/2
164 / MIN	0.08	0.00	-0.03	0.00	-0.01	-0.00
Node	139	139	140	139	140	140
Case	ULS/11	ULS/11	ULS/2	ULS/11	ULS/2	ULS/2
165 / MAX	-0.11	-0.00	0.03	0.00	0.01	0.01
Node	140	140	140	140	127	127
Case	ULS/11	ULS/11	ULS/2	ULS/2	ULS/2	ULS/2
165 / MIN	-5.98	-0.04	-0.00	0.00	-0.00	-0.01
Node	140	140	127	140	140	140

Case	ULS/2	ULS/2	ULS/1	ULS/11	ULS/2	ULS/2
166 / MAX	1.90	0.06	0.02	-0.00	0.01	0.01
Node	141	121	121	121	141	121
Case	ULS/2	ULS/2	ULS/2	ULS/11	ULS/2	ULS/2
166 / MIN	0.04	0.00	0.00	-0.00	-0.00	-0.01
Node	121	121	141	121	121	141
Case	ULS/11	ULS/11	ULS/11	ULS/2	ULS/2	ULS/2
167 / MAX	0.98	-0.00	0.03	0.00	0.00	0.01
Node	141	141	141	141	142	142
Case	ULS/2	ULS/11	ULS/2	ULS/2	ULS/2	ULS/2
167 / MIN	0.03	-0.10	0.00	0.00	-0.01	-0.02
Node	142	141	142	141	141	141
Case	ULS/11	ULS/2	ULS/11	ULS/11	ULS/2	ULS/2
168 / MAX	-0.01	0.11	-0.00	-0.00	0.01	0.02
Node	143	142	142	142	142	142
Case	ULS/11	ULS/2	ULS/11	ULS/11	ULS/2	ULS/2
168 / MIN	-0.47	0.00	-0.09	-0.00	-0.02	-0.02
Node	142	142	143	142	143	143
Case	ULS/2	ULS/11	ULS/2	ULS/2	ULS/2	ULS/2
169 / MAX	9.17	-0.00	-0.00	0.00	0.02	0.01
Node	143	143	143	143	143	144
Case	ULS/2	ULS/11	ULS/11	ULS/2	ULS/2	ULS/2
169 / MIN	0.26	-0.12	-0.07	0.00	-0.01	-0.03
Node	144	143	144	143	144	143
Case	ULS/11	ULS/2	ULS/2	ULS/11	ULS/2	ULS/2
170 / MAX	-0.24	0.07	0.00	-0.00	0.00	0.01
Node	145	144	144	144	144	144
Case	ULS/11	ULS/2	ULS/1	ULS/11	ULS/2	ULS/2
170 / MIN	-8.68	0.00	-0.01	-0.00	-0.00	-0.01

Node	144	144	145	144	145	145
Case	ULS/2	ULS/11	ULS/2	ULS/2	ULS/2	ULS/2
171 / MAX	7.63	-0.00	-0.00	0.00	0.01	0.01
Node	145	145	145	145	145	146
Case	ULS/2	ULS/11	ULS/11	ULS/2	ULS/2	ULS/2
171 / MIN	0.20	-0.06	-0.03	0.00	-0.01	-0.01
Node	146	145	146	145	146	145
Case	ULS/11	ULS/2	ULS/2	ULS/11	ULS/2	ULS/2
172 / MAX	-0.19	0.04	-0.00	-0.00	0.00	0.01
Node	147	146	146	146	146	146
Case	ULS/11	ULS/2	ULS/11	ULS/11	ULS/2	ULS/2
172 / MIN	-7.40	0.00	-0.01	-0.00	-0.00	-0.01
Node	146	146	147	146	147	147
Case	ULS/2	ULS/11	ULS/2	ULS/2	ULS/2	ULS/2
173 / MAX	8.71	-0.00	-0.00	0.00	0.00	0.00
Node	147	147	147	147	147	148
Case	ULS/2	ULS/11	ULS/11	ULS/2	ULS/2	ULS/2
173 / MIN	0.20	-0.03	-0.01	0.00	-0.00	-0.01
Node	148	147	148	147	148	147
Case	ULS/11	ULS/2	ULS/2	ULS/11	ULS/2	ULS/2
174 / MAX	-0.25	-0.00	-0.00	-0.00	0.01	0.00
Node	128	148	148	148	148	128
Case	ULS/11	ULS/11	ULS/11	ULS/11	ULS/2	ULS/2
174 / MIN	-11.30	-0.01	-0.08	-0.00	-0.02	-0.00
Node	148	148	128	148	128	148
Case	ULS/2	ULS/2	ULS/2	ULS/2	ULS/2	ULS/2
175 / MAX	-0.02	-0.00	0.08	-0.00	0.01	0.00
Node	121	121	121	121	149	149
Case	ULS/11	ULS/11	ULS/2	ULS/11	ULS/2	ULS/2

175 / MIN	-0.57	-0.01	0.00	-0.00	-0.02	-0.00
Node	121	121	149	121	121	121
Case	ULS/2	ULS/2	ULS/11	ULS/2	ULS/2	ULS/2
176 / MAX	0.00	0.01	-0.00	0.00	0.02	0.00
Node	149	149	149	149	149	149
Case	ULS/1	ULS/2	ULS/11	ULS/2	ULS/2	ULS/2
176 / MIN	-0.25	0.00	-0.12	0.00	-0.02	-0.00
Node	149	149	142	149	142	142
Case	ULS/2	ULS/11	ULS/2	ULS/11	ULS/2	ULS/2
177 / MAX	-0.43	-0.02	8.60	0.02	1.22	0.04
Node	2287	2280	2280	2280	2287	2287
Case	ULS/11	ULS/11	ULS/2	ULS/2	ULS/2	ULS/2
177 / MIN	-21.35	-0.35	0.15	0.00	0.01	-0.00
Node	2280	2280	2287	2280	2280	2280
Case	ULS/2	ULS/2	ULS/11	ULS/11	ULS/11	ULS/1
178 / MAX	0.79	-0.00	0.14	0.00	0.02	0.00
Node	142	142	142	142	151	151
Case	ULS/2	ULS/11	ULS/2	ULS/1	ULS/2	ULS/2
178 / MIN	0.01	-0.00	0.00	-0.00	-0.02	-0.00
Node	142	142	151	142	142	142
Case	ULS/11	ULS/2	ULS/11	ULS/2	ULS/2	ULS/1
179 / MAX	-0.01	0.01	-0.00	0.00	0.02	0.00
Node	151	151	151	151	151	151
Case	ULS/11	ULS/2	ULS/11	ULS/2	ULS/2	ULS/2
179 / MIN	-1.13	0.00	-0.13	-0.00	-0.02	-0.00
Node	151	151	144	151	144	144
Case	ULS/2	ULS/11	ULS/2	ULS/1	ULS/2	ULS/2
180 / MAX	1.37	0.01	0.12	-0.00	0.02	0.00
Node	144	144	144	144	152	144

Case	ULS/2	ULS/2	ULS/2	ULS/11	ULS/2	ULS/2
180 / MIN	0.02	0.00	0.00	-0.00	-0.02	-0.00
Node	144	144	152	144	144	152
Case	ULS/11	ULS/11	ULS/11	ULS/2	ULS/2	ULS/2
181 / MAX	-0.02	0.00	-0.00	-0.00	0.01	0.00
Node	152	152	152	152	152	152
Case	ULS/11	ULS/2	ULS/11	ULS/11	ULS/2	ULS/2
181 / MIN	-1.52	-0.00	-0.09	-0.00	-0.02	-0.00
Node	152	152	146	152	146	146
Case	ULS/2	ULS/1	ULS/2	ULS/2	ULS/2	ULS/2
182 / MAX	1.58	0.01	0.09	0.00	0.02	0.00
Node	146	146	146	146	153	146
Case	ULS/2	ULS/2	ULS/2	ULS/4	ULS/2	ULS/2
182 / MIN	0.02	0.00	0.00	-0.00	-0.01	-0.00
Node	146	146	153	146	146	153
Case	ULS/11	ULS/11	ULS/11	ULS/3	ULS/2	ULS/2
183 / MAX	-0.02	-0.00	-0.00	0.00	0.01	0.00
Node	153	153	153	153	153	148
Case	ULS/11	ULS/11	ULS/11	ULS/3	ULS/2	ULS/2
183 / MIN	-1.69	-0.01	-0.07	-0.00	-0.01	-0.00
Node	153	153	148	153	148	153
Case	ULS/2	ULS/2	ULS/2	ULS/4	ULS/2	ULS/2
184 / MAX	2.46	0.02	0.07	0.00	0.02	0.00
Node	148	148	148	148	126	148
Case	ULS/2	ULS/2	ULS/2	ULS/2	ULS/2	ULS/2
184 / MIN	0.04	0.00	0.00	0.00	-0.01	-0.01
Node	148	148	126	148	148	126
Case	ULS/11	ULS/11	ULS/11	ULS/11	ULS/2	ULS/2
185 / MAX	2.78	0.08	0.03	-0.00	0.00	0.01

Node	133	122	122	122	133	122
Case	ULS/2	ULS/2	ULS/2	ULS/11	ULS/2	ULS/2
185 / MIN	0.07	0.00	0.00	-0.00	-0.01	-0.02
Node	122	122	133	122	122	133
Case	ULS/11	ULS/11	ULS/11	ULS/2	ULS/2	ULS/2
186 / MAX	-0.02	-0.00	0.00	0.00	0.00	0.01
Node	133	133	133	133	154	154
Case	ULS/11	ULS/11	ULS/4	ULS/2	ULS/1	ULS/2
186 / MIN	-1.55	-0.10	-0.00	0.00	-0.00	-0.02
Node	154	133	154	133	133	133
Case	ULS/2	ULS/2	ULS/3	ULS/11	ULS/2	ULS/2
187 / MAX	0.89	0.13	-0.00	-0.00	0.00	0.02
Node	135	154	154	154	154	154
Case	ULS/2	ULS/2	ULS/11	ULS/11	ULS/2	ULS/2
187 / MIN	0.02	0.00	-0.01	-0.00	-0.00	-0.02
Node	154	154	135	154	135	135
Case	ULS/11	ULS/11	ULS/2	ULS/2	ULS/2	ULS/2
188 / MAX	0.46	-0.00	0.00	0.00	0.00	0.02
Node	135	135	135	135	135	155
Case	ULS/2	ULS/11	2	ULS/2	ULS/2	ULS/2
188 / MIN	0.00	-0.12	-0.00	0.00	-0.00	-0.03
Node	135	135	155	135	155	135
Case	2	ULS/2	ULS/4	ULS/11	ULS/4	ULS/2
189 / MAX	-0.09	0.07	0.00	-0.00	0.00	0.01
Node	155	155	155	155	155	155
Case	2	ULS/2	ULS/1	ULS/11	ULS/2	ULS/2
189 / MIN	-0.72	0.00	-0.00	-0.00	-0.00	-0.01
Node	155	155	137	155	137	137
Case	ULS/2	ULS/11	ULS/2	ULS/2	ULS/2	ULS/2

190 / MAX	0.62	-0.00	0.00	0.00	0.00	0.01
Node	137	137	137	137	156	156
Case	ULS/2	ULS/11	ULS/2	ULS/2	ULS/2	ULS/2
190 / MIN	0.08	-0.05	-0.00	0.00	-0.00	-0.01
Node	137	137	156	137	137	137
Case	2	ULS/2	ULS/1	ULS/11	ULS/2	ULS/2
191 / MAX	-0.07	0.03	-0.00	-0.00	0.00	0.00
Node	139	156	156	156	156	156
Case	ULS/11	ULS/2	ULS/11	ULS/11	ULS/2	ULS/2
191 / MIN	-0.84	0.00	-0.01	-0.00	-0.00	-0.00
Node	156	156	139	156	139	139
Case	ULS/2	ULS/11	ULS/2	ULS/2	ULS/2	ULS/2
192 / MAX	1.04	0.02	0.01	0.00	0.00	0.00
Node	139	139	139	139	157	139
Case	ULS/2	ULS/2	ULS/2	ULS/2	ULS/2	ULS/1
192 / MIN	0.07	0.00	-0.00	0.00	-0.00	-0.01
Node	157	139	157	139	139	157
Case	ULS/11	ULS/11	ULS/1	ULS/11	ULS/2	ULS/2
193 / MAX	-0.08	-0.00	-0.00	-0.00	0.00	0.01
Node	127	157	157	157	157	127
Case	ULS/11	ULS/11	ULS/11	ULS/11	ULS/2	ULS/2
193 / MIN	-1.73	-0.05	-0.01	-0.00	-0.00	-0.01
Node	157	157	127	157	127	157
Case	ULS/2	ULS/2	ULS/2	ULS/2	ULS/2	ULS/2
194 / MAX	3.55	-0.00	0.27	0.00	0.05	0.00
Node	158	158	158	158	159	159
Case	ULS/2	ULS/11	ULS/2	ULS/1	ULS/2	ULS/2
194 / MIN	0.05	-0.03	0.00	-0.00	-0.05	-0.01
Node	158	158	159	158	158	158

Case	ULS/11	ULS/2	ULS/11	ULS/2	ULS/2	ULS/2
195 / MAX	-0.02	0.01	-0.00	-0.00	0.01	-0.00
Node	161	160	160	160	160	161
Case	ULS/11	ULS/3	ULS/11	ULS/11	ULS/2	ULS/11
195 / MIN	-1.38	-0.00	-0.02	-0.00	-0.00	-0.00
Node	160	160	161	160	161	161
Case	ULS/2	ULS/4	ULS/2	ULS/2	ULS/2	ULS/2
196 / MAX	0.26	-0.00	0.15	0.00	0.03	0.00
Node	160	160	160	160	162	162
Case	ULS/4	ULS/11	ULS/2	ULS/1	ULS/2	ULS/2
196 / MIN	-0.24	-0.01	0.00	-0.00	-0.03	-0.00
Node	160	160	162	160	160	160
Case	ULS/3	ULS/2	ULS/11	ULS/2	ULS/2	ULS/2
197 / MAX	1.56	-0.00	0.04	0.00	0.00	0.00
Node	163	163	163	163	164	164
Case	ULS/2	ULS/11	ULS/2	ULS/2	ULS/2	ULS/2
197 / MIN	0.04	-0.04	-0.00	0.00	-0.01	-0.00
Node	163	163	164	163	163	163
Case	ULS/11	ULS/2	ULS/1	ULS/11	ULS/2	ULS/2
198 / MAX	-0.50	0.18	-0.02	-0.00	0.38	0.01
Node	2136	2287	2287	2287	2287	2287
Case	ULS/11	ULS/2	ULS/11	ULS/11	ULS/2	ULS/2
198 / MIN	-25.80	-0.00	-0.43	-0.02	0.01	-0.02
Node	2287	2287	2136	2287	2136	2136
Case	ULS/2	ULS/1	ULS/2	ULS/2	ULS/11	ULS/2
199 / MAX	-0.06	-0.00	-0.01	0.00	0.07	0.00
Node	165	164	164	164	164	165
Case	ULS/11	ULS/11	ULS/11	ULS/2	ULS/2	ULS/2
199 / MIN	-3.07	-0.02	-0.53	0.00	-0.06	-0.00

Node	164	164	165	164	165	164
Case	ULS/2	ULS/2	ULS/2	ULS/11	ULS/2	ULS/2
200 / MAX	0.59	0.16	0.04	0.00	0.00	0.02
Node	165	165	165	165	166	165
Case	ULS/2	ULS/2	ULS/2	ULS/2	ULS/4	ULS/2
200 / MIN	0.01	0.00	-0.00	0.00	-0.01	-0.02
Node	165	165	166	165	165	166
Case	ULS/11	ULS/11	ULS/1	ULS/11	ULS/2	ULS/2
201 / MAX	-0.06	0.05	0.64	0.00	0.08	0.01
Node	166	166	166	166	163	166
Case	ULS/11	ULS/2	ULS/2	ULS/2	ULS/2	ULS/2
201 / MIN	-3.59	0.00	0.01	0.00	-0.07	-0.01
Node	163	166	163	166	166	163
Case	ULS/2	ULS/11	ULS/11	ULS/11	ULS/2	ULS/2
202 / MAX	-0.04	-0.00	-0.01	0.00	0.05	0.00
Node	168	167	167	167	167	168
Case	ULS/11	ULS/11	ULS/11	ULS/2	ULS/2	ULS/2
202 / MIN	-2.18	-0.04	-0.45	0.00	-0.06	-0.01
Node	167	167	168	167	168	167
Case	ULS/2	ULS/2	ULS/2	ULS/11	ULS/2	ULS/2
203 / MAX	-0.01	0.08	0.08	0.00	0.01	0.01
Node	168	168	168	168	169	168
Case	ULS/11	ULS/2	ULS/4	ULS/2	ULS/2	ULS/2
203 / MIN	-0.77	0.00	-0.00	0.00	-0.01	-0.01
Node	169	168	169	168	168	169
Case	ULS/2	ULS/11	ULS/3	ULS/11	ULS/4	ULS/2
204 / MAX	-0.05	0.00	0.57	0.00	0.07	0.00
Node	169	169	169	169	170	169
Case	ULS/11	ULS/4	ULS/2	ULS/2	ULS/2	ULS/4

204 / MIN	-3.43	-0.01	0.01	0.00	-0.07	-0.00
Node	170	169	170	169	169	169
Case	ULS/2	ULS/3	ULS/11	ULS/11	ULS/2	ULS/3
205 / MAX	0.10	-0.00	0.01	0.00	0.00	0.01
Node	167	170	170	170	170	167
Case	ULS/4	ULS/11	ULS/3	ULS/2	ULS/4	ULS/2
205 / MIN	-0.07	-0.06	-0.03	0.00	-0.00	-0.01
Node	170	170	167	170	167	170
Case	ULS/3	ULS/2	ULS/4	ULS/11	ULS/4	ULS/2
206 / MAX	-0.02	-0.00	0.07	-0.00	0.01	0.02
Node	172	171	171	171	172	172
Case	ULS/11	ULS/11	ULS/4	ULS/11	ULS/4	ULS/2
206 / MIN	-1.77	-0.15	-0.01	-0.01	-0.01	-0.02
Node	171	171	171	171	171	171
Case	ULS/2	ULS/2	ULS/3	ULS/2	ULS/4	ULS/2
207 / MAX	-0.13	-0.00	0.00	0.00	0.02	-0.00
Node	172	172	172	172	172	173
Case	ULS/11	ULS/11	ULS/1	ULS/3	ULS/2	ULS/11
207 / MIN	-6.50	-0.02	-0.09	-0.00	-0.00	-0.01
Node	172	172	173	172	173	172
Case	ULS/2	ULS/2	ULS/2	ULS/4	ULS/4	ULS/2
208 / MAX	-0.02	-0.00	0.00	0.00	0.00	0.04
Node	173	173	173	173	173	174
Case	ULS/11	ULS/11	ULS/1	ULS/2	ULS/2	ULS/2
208 / MIN	-0.17	-0.29	-0.02	0.00	-0.00	-0.03
Node	174	173	173	173	174	173
Case	ULS/2	ULS/2	ULS/2	ULS/11	ULS/2	ULS/2
209 / MAX	7.25	0.04	0.07	-0.00	0.02	-0.00
Node	174	174	174	174	171	174

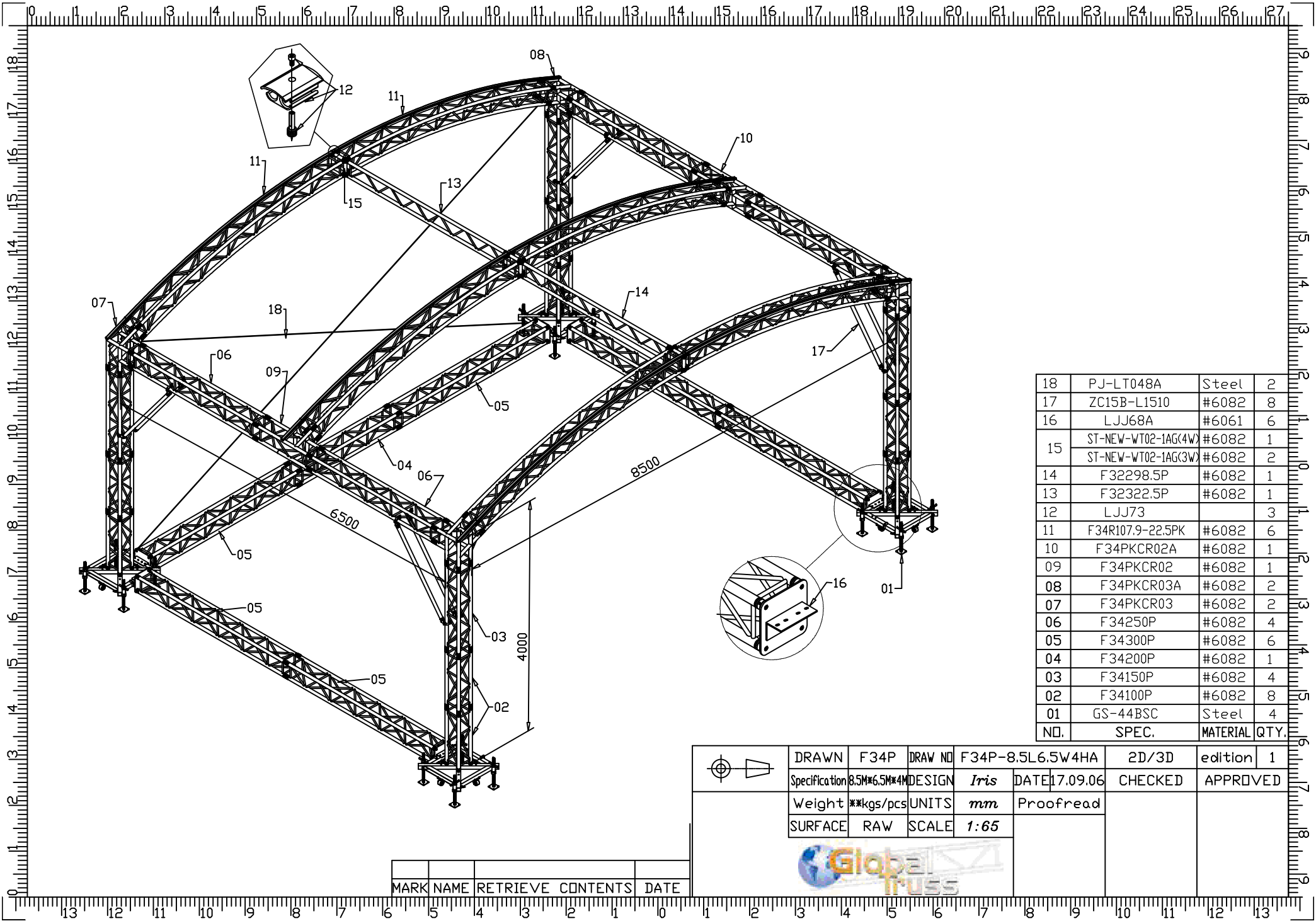
Case	ULS/2	ULS/2	ULS/2	ULS/11	ULS/2	ULS/11
209 / MIN	0.14	0.00	-0.00	-0.00	-0.00	-0.01
Node	174	174	171	174	174	171
Case	ULS/11	ULS/11	ULS/1	ULS/2	ULS/4	ULS/2
210 / MAX	-0.49	0.18	-0.05	-0.00	0.34	0.00
Node	2143	2136	2136	2136	2136	2136
Case	ULS/11	ULS/2	ULS/11	ULS/11	ULS/2	ULS/1
210 / MIN	-25.71	0.02	-2.43	-0.02	-0.05	-0.04
Node	2136	2136	2143	2136	2143	2143
Case	ULS/2	ULS/11	ULS/2	ULS/2	ULS/2	ULS/2
211 / MAX	-0.44	-0.00	0.14	-0.00	0.06	-0.00
Node	2168	2143	2143	2143	2168	2168
Case	ULS/11	ULS/11	ULS/2	ULS/11	ULS/2	ULS/11
211 / MIN	-21.43	-0.05	0.00	-0.01	-0.02	-0.04
Node	2143	2143	2168	2143	2143	2143
Case	ULS/2	ULS/2	ULS/11	ULS/2	ULS/2	ULS/2
212 / MAX	-0.39	0.02	-0.00	-0.00	0.06	-0.00
Node	2166	2168	2168	2168	2168	2168
Case	ULS/11	ULS/2	ULS/11	ULS/11	ULS/2	ULS/11
212 / MIN	-15.56	0.00	-0.11	-0.01	-0.00	-0.02
Node	2168	2168	2166	2168	2166	2166
Case	ULS/2	ULS/11	ULS/2	ULS/2	ULS/1	ULS/2
213 / MAX	-0.11	0.23	0.45	-0.00	0.15	-0.00
Node	2145	2166	2166	2166	2145	2166
Case	ULS/11	ULS/2	ULS/2	ULS/11	ULS/2	ULS/11
213 / MIN	-4.72	0.01	0.01	-0.00	0.00	-0.09
Node	2166	2166	2145	2166	2166	2145
Case	ULS/2	ULS/11	ULS/11	ULS/2	ULS/11	ULS/2
214 / MAX	-0.10	-0.05	-0.04	0.00	0.18	0.05

Node	2152	2145	2145	2145	2145	2152
Case	ULS/11	ULS/11	ULS/11	ULS/2	ULS/2	ULS/2
214 / MIN	-4.36	-0.96	-1.99	0.00	-0.14	-0.10
Node	2145	2145	2145	2145	2152	2145
Case	ULS/2	ULS/2	ULS/2	ULS/11	ULS/2	ULS/2
215 / MAX	3.69	0.14	0.22	0.00	0.02	0.04
Node	2164	2152	2152	2152	2164	2152
Case	ULS/2	ULS/2	ULS/2	ULS/2	ULS/2	ULS/2
215 / MIN	0.13	0.01	0.00	0.00	-0.10	-0.04
Node	2152	2152	2164	2152	2152	2164
Case	ULS/11	ULS/11	ULS/11	ULS/11	ULS/2	ULS/2
216 / MAX	18.02	-0.00	0.21	0.00	0.09	-0.00
Node	2154	2164	2164	2164	2154	2154
Case	ULS/2	ULS/11	ULS/2	ULS/3	ULS/2	ULS/11
216 / MIN	0.52	-0.09	0.00	-0.00	0.00	-0.04
Node	2164	2164	2154	2164	2164	2164
Case	ULS/11	ULS/2	ULS/11	ULS/4	ULS/11	ULS/2
217 / MAX	18.43	-0.04	-0.05	0.00	0.12	0.10
Node	2158	2154	2154	2154	2154	2158
Case	ULS/2	ULS/11	ULS/11	ULS/2	ULS/2	ULS/2
217 / MIN	0.54	-0.86	-2.00	0.00	-0.20	-0.03
Node	2154	2154	2154	2154	2158	2154
Case	ULS/11	ULS/2	ULS/2	ULS/11	ULS/2	ULS/2
218 / MAX	-0.02	0.03	0.03	0.00	0.00	0.00
Node	183	183	183	183	183	183
Case	ULS/11	ULS/2	ULS/3	ULS/3	ULS/4	ULS/2
218 / MIN	-0.65	0.00	-0.03	-0.00	-0.01	-0.00
Node	183	183	184	183	184	184
Case	ULS/2	ULS/11	ULS/4	ULS/4	ULS/4	ULS/2

219 / MAX	-0.01	0.04	0.00	0.00	0.00	0.00
Node	185	184	185	184	184	184
Case	ULS/11	ULS/4	ULS/1	ULS/2	ULS/2	ULS/4
219 / MIN	-0.33	-0.01	-0.04	0.00	-0.01	-0.01
Node	184	184	184	184	185	185
Case	ULS/2	ULS/3	ULS/2	ULS/11	ULS/2	ULS/2
220 / MAX	1.38	0.02	0.00	0.00	0.01	0.00
Node	185	185	185	185	185	185
Case	ULS/2	ULS/2	3	ULS/3	ULS/3	ULS/2
220 / MIN	0.04	0.00	-0.08	-0.00	-0.01	-0.00
Node	185	185	186	185	186	186
Case	ULS/11	ULS/11	ULS/3	ULS/4	ULS/3	ULS/3
221 / MAX	0.56	0.00	0.01	0.00	0.01	0.01
Node	186	186	183	186	186	183
Case	ULS/3	2	ULS/4	ULS/1	ULS/3	ULS/4
221 / MIN	-0.73	-0.09	-0.06	-0.00	-0.01	-0.01
Node	183	186	186	186	183	186
Case	ULS/4	ULS/4	ULS/3	ULS/2	ULS/3	ULS/4
222 / MAX	0.98	-0.00	-0.00	0.00	0.01	0.01
Node	187	187	187	187	187	188
Case	ULS/2	ULS/11	ULS/11	ULS/2	ULS/2	ULS/2
222 / MIN	0.01	-0.09	-0.08	0.00	-0.01	-0.01
Node	188	187	188	187	188	187
Case	ULS/11	ULS/2	ULS/2	ULS/11	ULS/2	ULS/2
223 / MAX	-0.06	-0.00	-0.00	0.00	0.02	0.00
Node	189	188	188	188	188	189
Case	ULS/11	ULS/11	ULS/11	ULS/2	ULS/2	ULS/2
223 / MIN	-2.90	-0.04	-0.18	0.00	-0.02	-0.01
Node	188	188	189	188	189	188

Case	ULS/2	ULS/2	ULS/2	ULS/11	ULS/2	ULS/2
224 / MAX	-0.03	0.12	0.13	0.01	0.02	0.02
Node	189	189	189	189	190	189
Case	ULS/11	ULS/2	ULS/2	ULS/2	ULS/2	ULS/2
224 / MIN	-1.73	0.00	0.00	0.00	-0.01	-0.01
Node	190	189	190	189	189	190
Case	ULS/2	ULS/11	ULS/11	ULS/11	ULS/2	ULS/2
225 / MAX	-0.08	-0.00	0.45	0.00	0.05	0.01
Node	190	190	190	190	187	187
Case	ULS/11	ULS/11	ULS/2	ULS/2	ULS/2	ULS/2
225 / MIN	-5.05	-0.05	0.01	0.00	-0.06	-0.01
Node	187	190	187	190	190	190
Case	ULS/2	ULS/2	ULS/11	ULS/11	ULS/2	ULS/2
226 / MAX	-0.01	-0.00	0.04	0.00	0.00	0.01
Node	191	191	191	191	192	192
Case	ULS/11	ULS/11	ULS/2	ULS/2	ULS/2	ULS/2
226 / MIN	-0.36	-0.08	0.00	0.00	-0.00	-0.01
Node	191	191	192	191	191	191
Case	ULS/2	ULS/2	ULS/11	ULS/11	ULS/2	ULS/2
227 / MAX	1.34	-0.00	0.00	0.00	0.00	-0.00
Node	193	192	192	192	192	193
Case	ULS/2	ULS/11	ULS/2	ULS/2	ULS/1	ULS/11
227 / MIN	0.01	-0.01	-0.00	0.00	-0.00	-0.00
Node	192	192	193	192	192	192
Case	ULS/11	ULS/2	ULS/1	ULS/11	ULS/2	ULS/2
228 / MAX	0.06	0.20	0.02	0.00	0.00	0.02
Node	193	193	193	193	194	193
Case	ULS/4	ULS/2	ULS/4	ULS/2	ULS/2	ULS/2
228 / MIN	-0.01	0.00	-0.01	0.00	-0.00	-0.02

Node	193	193	194	193	193	194
Case	ULS/3	ULS/11	ULS/3	ULS/11	ULS/4	ULS/2
229 / MAX	0.81	-0.00	0.24	0.00	0.03	0.00
Node	194	194	194	194	191	191
Case	ULS/2	ULS/11	ULS/2	ULS/2	ULS/2	ULS/2
229 / MIN	0.01	-0.02	0.00	0.00	-0.03	-0.00
Node	191	194	191	194	194	194
Case	ULS/11	ULS/2	ULS/11	ULS/11	ULS/2	ULS/2
230 / MAX	2.14	0.01	0.00	-0.00	0.00	0.01
Node	195	195	195	195	195	196
Case	ULS/2	ULS/4	ULS/1	ULS/11	ULS/2	ULS/2
230 / MIN	0.10	-0.02	-0.01	-0.01	-0.00	-0.00
Node	196	195	196	195	196	195
Case	ULS/11	ULS/3	ULS/2	ULS/2	ULS/2	ULS/1
231 / MAX	-0.10	-0.00	-0.00	-0.00	0.00	0.02
Node	197	197	197	197	197	198
Case	ULS/11	ULS/11	ULS/11	ULS/11	ULS/2	ULS/2
231 / MIN	-3.03	-0.14	-0.02	-0.01	-0.00	-0.00
Node	198	197	198	197	198	197
Case	ULS/2	ULS/2	ULS/2	ULS/2	ULS/2	ULS/2
232 / MAX	-0.07	0.02	0.04	0.00	0.00	0.00
Node	5045	5058	5045	5045	5058	5045
Case	ULS/11	ULS/2	ULS/2	ULS/2	ULS/2	ULS/2
232 / MIN	-2.31	0.00	0.00	-0.00	-0.01	-0.00
Node	5045	5045	5058	5045	5045	5058
Case	ULS/2	ULS/11	ULS/11	ULS/1	ULS/2	ULS/2
233 / MAX	18.83	-0.01	-0.00	0.00	0.17	0.02
Node	2163	2158	2158	2158	2158	2163
Case	ULS/2	ULS/11	ULS/11	ULS/2	ULS/2	ULS/2



18	PJ-LT048A	Steel	2
17	ZC15B-L1510	#6082	8
16	LJJ68A	#6061	6
15	ST-NEW-WT02-1AG(4W)	#6082	1
	ST-NEW-WT02-1AG(3W)	#6082	2
14	F32298.5P	#6082	1
13	F32322.5P	#6082	1
12	LJJ73		3
11	F34R107.9-22.5PK	#6082	6
10	F34PKCR02A	#6082	1
09	F34PKCR02	#6082	1
08	F34PKCR03A	#6082	2
07	F34PKCR03	#6082	2
06	F34250P	#6082	4
05	F34300P	#6082	6
04	F34200P	#6082	1
03	F34150P	#6082	4
02	F34100P	#6082	8
01	GS-44BSC	Steel	4
NO.	SPEC.	MATERIAL	QTY.

	DRAWN	F34P	DRAW NO	F34P-8.5L6.5W4HA	2D/3D	edition	1	
	Specification	8.5M*6.5M*4M	DESIGN	Iris	DATE	17.09.06	CHECKED	APPROVED
	Weight	**kgs/pcs	UNITS	mm	Proofread			
	SURFACE	RAW	SCALE	1:65				

MARK	NAME	RETRIEVE	CONTENTS	DATE

DATA SHEET

F34P

F34P SQUARE TRUSS

TECHNICAL DATA

Chord diameter: 50mmØ
 Wall thickness: 3mm
 4 x Conical Spigots included.

LINEAR

CODE	LENGTH	WEIGHT
GT F34PL025	0.25m	4.65kg
GT F34PL029	0.29m	4.8kg
GT F34PL040	0.4m	5.4kg
GT F34PL050	0.5m	6.0kg
GT F34PL075	0.75m	7.5kg
GT F34PL100	1.0m	9.0kg
GT F34PL125	1.25m	10.5kg
GT F34PL150	1.5m	12.0kg
GT F34PL200	2.0m	16.0kg
GT F34PL250	2.5m	19.5kg
GT F34PL300	3.0m	20.0kg
GT F34PL350	3.5m	23.0kg
GT F34PL400	4.0m	25.0kg
GT F34PL450	4.5m	28.0kg
GT F34PL500	5.0m	31.0kg

Custom lengths and radials can be manufactured to order.



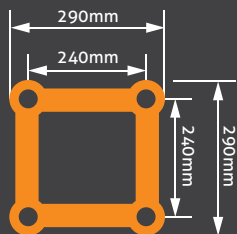
Contact us for more info.

Sydney (02) 9649 2266
Melbourne (03) 9645 2266
Brisbane 0419 777 877
Perth 0419 898 999
Email info@dq.com.au

Check out our website

dq.com.au

INCLUSIVE



LOAD TABLE

Span	Uniform distribution load	Centre point load	point load in third-point	point load in quarter-point	point load in fifth-point
4.0	509	1376	929	680	510
5.0	406	1142	789	617	485
6.0	337	972	681	519	411
7.0	266	845	597	446	357
8.0	203	744	530	391	314
9.0	160	663	476	347	252
10.0	128	597	430	311	279
11.0	106	541	391	281	228
12.0	87	493	359	256	208
13.0	74	452	330	233	190
14.0	63	416	305	215	175
15.0	54	384	282	107	162
16.0	49	355	262	182	150
17.0	40	329	243	169	138
18.0	35	306	227	157	129

The weight of the truss is considered in the load table.

Technical changes and errors are reserved



Available on the App Store

FOLLOW US:



DESIGN QUINTESSENCE
 excellence in staging products and design

