

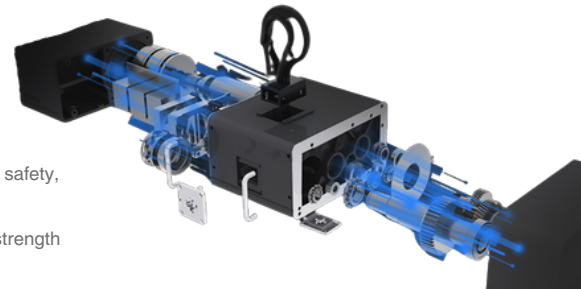


Mode 611 D8+ Chain Hoist

Compact Design. Certified Safety. Professional Performance.

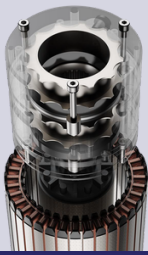
The Mode 611 D8+ Electric Chain Hoist range is designed for professional stage and rigging applications where safety, precision and reliability are critical.

Engineered to D8+ standards, each model combines intelligent safety protection, low noise operation and high-strength construction for demanding production environments.



Dual Electromagnetic Brake System

Delivers precise load control with rapid braking and smooth release. The system automatically engages during power loss for added operational safety, while supporting long-term durability and low maintenance requirements.



Phase Failure & IP65 Rated Protection

The hoist automatically stops operation during phase failure conditions to help protect the motor and maintain operational safety.

The IP65-rated housing provides strong protection against dust ingress and low-pressure water exposure, making it suitable for demanding indoor and outdoor entertainment production environments.

High-Strength Aluminium Alloy Housing

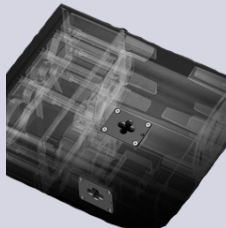
The aluminium alloy housing reduces overall size and weight while maintaining high structural strength.

This design improves durability and impact resistance, ensuring reliable performance in demanding stage and rigging environments.



Adjustable Electronic Limit Switch

Automatically detects upper and lower lifting limits and activates emergency braking when reached, helping protect both the hoist and suspended loads during operation.



G100 Chain

High-strength G100 load chain provides a higher working load limit with improved toughness and wear resistance. Each chain undergoes strict quality control and testing to ensure consistent performance and reliability in demanding rigging applications.



New Transmission Assembly

Precision-machined from high-strength alloy steel, the transmission assembly delivers exceptional tensile strength, hardness and durability for long-term operation.

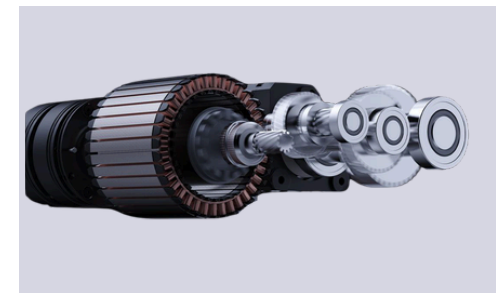
Tight manufacturing tolerances and controlled surface finishing ensure smooth performance, reduced wear and reliable, maintenance-light operation in demanding lifting applications.

Multi-cycle Overload Protection

The electronic overload system continuously detects the weight of the lifted load and activates an emergency stop when overload conditions occur, ensuring safe operation on site. This system is supported by an integrated mechanical overload clutch, providing an additional layer of mechanical protection to safeguard the gearbox, motor and load path under repeated or excessive load conditions.

Motor Driver Safety & Stability

The motor driver delivers stable, reliable control performance for precise hoist operation. It has passed TÜV Rheinland testing and complies with EU EN 61800 standards, ensuring safe and consistent performance in professional lifting applications.



D8+

Mode Chain Hoist



Mode 611 D8+ Chain Hoist

Compact & Sleek Design for Heavy-Duty Applications

The Mode 611 D8+ Electric Chain Hoist is purpose-built for professional rigging environments where reliability, precision and safety cannot be compromised.

Delivering a high lifting capacity within a compact form factor, making it ideal for tight grids, complex truss systems and space-limited rigging points.

Engineered to D8+ standards, the hoist integrates advanced safety systems, stable torque control and robust construction to ensure consistent performance under demanding load conditions.

It is designed to support critical entertainment applications including truss structures, line arrays, lighting systems and LED screens, where controlled lifting and dependable operation are essential.



SPECIFICATIONS

Model	MO-611D8+250	MO-611D8+500	MO-611D8+1000	MO-611D8+2000
Description	Mode 611 D8+ 250kg Electric Chain Hoist	Mode 611 D8+ 500kg Electric Chain Hoist	Mode 611 D8+ 1000kg Electric Chain Hoist	Mode 611 D8+ 2000kg Electric Chain Hoist
Dimensions	345 x 200 x 106mm	358 x 220 x 120mm	445 x 257 x 140mm	514 x 280 x 150mm
Weight	13kg	19.5kg	32kg	49kg
Chain Specifications	5 x 15mm	6 x 18mm	7.1 x 21mm	10 x 30mm
Lifting Speed	4m/min	4m/min	4m/min	4m/min
Noise Level	≤60dB	≤60dB	≤60dB	≤60dB
Brake	Double	Double	Double	Double
Safety Factor	≥ 8:1	≥ 8:1	≥ 8:1	≥ 8:1
Load Capacity	250kg	500kg	1000kg	2000kg
Protection Level	IP65	IP65	IP65	IP65
Fall	Single	Single	Single	Single
Frequency	50Hz	50Hz	50Hz	50Hz
Voltage	380-415V 3ph	380-415V 3ph	380-415V 3ph	380-415V 3ph
Limit Switch	✓	✓	✓	✓
Output Power	0.2kw	0.45kw	0.6kw	1.5kw
Overload Protection	Mechanical Clutch	Mechanical Clutch	Mechanical Clutch	Mechanical Clutch